

# MBW BOULEVARD

## PHASE 1: SENNA RESIDENCES

JOINTLY BROUGHT TO YOU BY:



MB WORLD GROUP

**Land Owner:**

Tiara Cemerlang Sdn. Bhd.  
202301032690 (1526613-X)  
*Subsidiary of MB World Group Berhad*

**Developer:**

City Centre Transformation (JB)  
Sdn. Bhd.  
201401016953 (1093039-V)

The information contained in this presentation has not been independently verified. No representation, warranty or undertaking, express or implied, is made as to, and no reliance should be placed on, the fairness, accuracy, completeness or correctness of the information or the opinions contained herein. It is not the intention to provide, and you may not rely on this presentation as providing, a complete or comprehensive analysis of the financial or trading position or prospects of the Group and its subsidiaries. The information and opinions contained in this presentation should be considered in the context of the circumstances prevailing as of the date of this presentation subject to change without notice, and has not been, and will not be, updated or otherwise revised to reflect developments which may occur after the date of this presentation. None of the Group, nor any of our subsidiaries, affiliates, directors, officers, employees, advisors or representations shall have the obligation to update on further changes to such information and opinions or to correct any inaccuracies or omissions in this presentation and accuracy of the information and opinions contained in this presentation is not guaranteed. None of MB World Group Berhad nor any of their respective subsidiaries, affiliates or any of their directors, officers, employees, advisors or representatives shall have any liability whatsoever (in negligence or otherwise) for any loss howsoever arising from any use of this presentation or our contents or otherwise arising in connection with the presentation. This document is solely for reference purpose for your company. You agree not to photograph, copy or otherwise re-produce these materials in any form or pass on, directly or indirectly, these materials, in whole or in part, to any other person (whether within or outside your organisation/firm) or publish these materials in any manner for any purpose.

**CONFIDENTIAL. FOR INTERNAL REFERENCE ONLY. PLEASE DO NOT DISTRIBUTE.**  
LAST UPDATED ON 9 SEPTEMBER 2024.



<b>QUICK LINKS</b>
<b>TOWER A</b>
Storey Chart
Ground Floor
1 <sup>st</sup> Floor
2 <sup>nd</sup> Floor
3 <sup>rd</sup> Floor
4 <sup>th</sup> Floor
5 <sup>th</sup> Floor
6 <sup>th</sup> Floor
Typical Floor
Break Tank Floor
<b>TOWER B</b>
Storey Chart
Ground Floor
1 <sup>st</sup> Floor
2 <sup>nd</sup> Floor
3 <sup>rd</sup> Floor
4 <sup>th</sup> Floor
5 <sup>th</sup> Floor
6 <sup>th</sup> Floor
7 <sup>th</sup> Floor
Typical Floor
Break Tank Floor
<b>TOWER C</b>
Storey Chart
Ground Floor
1 <sup>st</sup> Floor
2 <sup>nd</sup> Floor
3 <sup>rd</sup> Floor
4 <sup>th</sup> Floor
5 <sup>th</sup> Floor
6 <sup>th</sup> Floor
7 <sup>th</sup> Floor
Typical Floor
Break Tank Floor
<b>UNIT PLAN</b>
<b>4TH SCHEDULE</b>

# NEARBY AMENITIES

School & College	Est. Dist.
SK Kampong Pasir	1.7 km
SJK(C) Tampoi	3.4 km
Dato' Abdul Rahman Yassin High Sch.	3.7 km
SJK(C) Kuo Kuang	4 km
SMK Bandar Baru Uda	4.5 km
SK Bandar Uda 2	4.8 km
Southern University College	6 km
Sek. Men. Teknik Johor Bahru	7 km
Institut Kemahiran MARA Johor Bahru	7 km
SJK(C) Foon Yew 4	7.7 km
Tun Fatimah School	7.7 km
IPGM Kampus Temenggong Ibrahim	8.8 km
Sri Utama Schools Johor Bahru	9.9 km
Invictus International School	12 km
Universiti Teknologi Malaysia	12 km
Fairview International School	14.5 km
Austin Heights Private & Int'l School	16.7 km
Transportation Hub	Est. Dist.
Terminal Tun Aminah	5.4 km
Larkin Sentral	9.2 km
Johor Bahru Sentral	12.2 km
Future Bukit Chagar RTS Station	12.5 km
Johor Bahru Int'l Ferry Terminal	13.9 km
Senai International Airport	18.3 km

Shopping Centre	Est. Dist.
Paradigm Mall Johor Bahru	2 km
B5 Johor Street Market	2.8 km
Angsana Mall Johor Bahru	3.3 km
Perling Mall	3.6 km
Giant Tampoi	3.7 km
Sutera Mall	3.8 km
NSK Trade City - Skudai	5.7 km
Bestari Bestmart	7.6 km
Beletime Danga Bay	7.8 km
AEON Mall Bukit Indah	7.9 km
Lotus's Bukit Indah	8.8 km
Paragon Market Place	8.8 km
KSL City Mall	10.8 km
KOMTAR JBCC	11.4 km
Johor Bahru City Square	12.1 km
AEON Bandar Dato' Onn	15 km
The Mall, Mid Valley Southkey	15.9 km
IKEA Tebrau	16.1 km
Toppen Shopping Centre	16.4 km

Medical Centre	Est. Dist.
KPJ Puteri Specialist Hospital	7.6 km
Sultanah Aminah Hospital	9.1 km
Columbia Asia Hospital - Iskandar Puteri	9.2 km
KPJ Johor Specialist Hospital	9.4 km
Kensington Green Specialist Centre	10.3 km
KPJ Bandar Dato' Onn Specialist Hospital	11.7 km
Columbia Asia Hospital - Tebrau	12.1 km
Gleneagles Hospital Medini Johor	15.4 km
Hospital Sultan Ismail	16.1 km

Leisure Destination	Est. Dist.
Dewan Badminton DJ Sport	300 m
Daiman Sri Skudai Sports Center	7.1 km
Arena Larkin	8.9 km
Taman Merdeka	9 km
Johor Golf & Country Club	9.5 km
Tunku Mahkota Ismail Youth Center	9.8 km
SIREH Park	9.8 km
Impian Emas Golf Club & Driving Range	11.9 km
Horizon Hills Golf & Country Club	12.8 km

\*Estimated distance

## QUICK LINKS

### TOWER A

#### Storey Chart

#### Ground Floor

#### 1<sup>st</sup> Floor

#### 2<sup>nd</sup> Floor

#### 3<sup>rd</sup> Floor

#### 4<sup>th</sup> Floor

#### 5<sup>th</sup> Floor

#### 6<sup>th</sup> Floor

#### Typical Floor

#### Break Tank Floor

### TOWER B

#### Storey Chart

#### Ground Floor

#### 1<sup>st</sup> Floor

#### 2<sup>nd</sup> Floor

#### 3<sup>rd</sup> Floor

#### 4<sup>th</sup> Floor

#### 5<sup>th</sup> Floor

#### 6<sup>th</sup> Floor

#### 7<sup>th</sup> Floor

#### Typical Floor

#### Break Tank Floor

### TOWER C

#### Storey Chart

#### Ground Floor

#### 1<sup>st</sup> Floor

#### 2<sup>nd</sup> Floor

#### 3<sup>rd</sup> Floor

#### 4<sup>th</sup> Floor

#### 5<sup>th</sup> Floor

#### 6<sup>th</sup> Floor

#### 7<sup>th</sup> Floor

#### Typical Floor

#### Break Tank Floor

### UNIT PLAN

#### 4TH SCHEDULE

# DEVELOPMENT DATA

<b>Project Name</b>	Senna Residences (Residensi Tiara Cemerlang 1) <i>*Subject to authority's approval</i>								
<b>Land Owner</b>	Tiara Cemerlang Sdn. Bhd. 202301032690 (1526613-X)			<b>Developer</b>	City Centre Transformation (JB) Sdn. Bhd. 201401016953 (1093039-V)				
<b>Location</b>	PTD 60251 (PTD Baru PTD 227234), Mukim Pulai, Daerah Johor Bahru, Johor. N 1° 30' 10.5", E 103° 41' 31.8"			<b>Land Area</b>	Approx. 7.37 Acres				
				<b>Land Tenure</b>	Leasehold				
<b>Components</b>	<ul style="list-style-type: none"> <li><b>Tower A:</b> 24-level serviced apartments (326 units)</li> <li><b>Tower B:</b> 24-level serviced apartments (319 units)</li> <li><b>Tower C:</b> 23-level serviced apartments (300 units)</li> </ul>			<ul style="list-style-type: none"> <li>8-level car park podium</li> <li>1 level of recreational facilities</li> <li>13 units of single-storey shops</li> </ul>					
<b>Facilities</b>	1. Multipurpose Hall	4. Kids Playroom	7. Climb & Slides	10. Swimming Pool					
	2. Gymnasium	5. Lounge	8. Outdoor Fitness	11. Wading Pool					
	3. Reading Room	6. Sauna	9. Roasted & Grilled						
Unit Details			Built-up Area		No. of Units				
Unit Type	Unit Composition		sq m	sq ft	Tower A	Tower B	Tower C	Total	
<b>A</b>	2 Rooms	2 Baths	65.43	704.28	140	98	89	327	34.6%
<b>B</b>	2 Rooms + 1 Study Area	2 Baths	77.93	838.83	70	94	90	254	26.9%
<b>C</b>	3 Rooms	2 Baths	88.10	948.30	116	127	121	364	38.5%
<b>Total</b>					<b>326</b>	<b>319</b>	<b>300</b>	<b>945</b>	<b>100%</b>

## QUICK LINKS

### TOWER A

Storey Chart

Ground Floor

1<sup>st</sup> Floor

2<sup>nd</sup> Floor

3<sup>rd</sup> Floor

4<sup>th</sup> Floor

5<sup>th</sup> Floor

6<sup>th</sup> Floor

Typical Floor

Break Tank Floor

### TOWER B

Storey Chart

Ground Floor

1<sup>st</sup> Floor

2<sup>nd</sup> Floor

3<sup>rd</sup> Floor

4<sup>th</sup> Floor

5<sup>th</sup> Floor

6<sup>th</sup> Floor

7<sup>th</sup> Floor

Typical Floor

Break Tank Floor

### TOWER C

Storey Chart

Ground Floor

1<sup>st</sup> Floor

2<sup>nd</sup> Floor

3<sup>rd</sup> Floor

4<sup>th</sup> Floor

5<sup>th</sup> Floor

6<sup>th</sup> Floor

7<sup>th</sup> Floor

Typical Floor

Break Tank Floor

### UNIT PLAN

4TH SCHEDULE

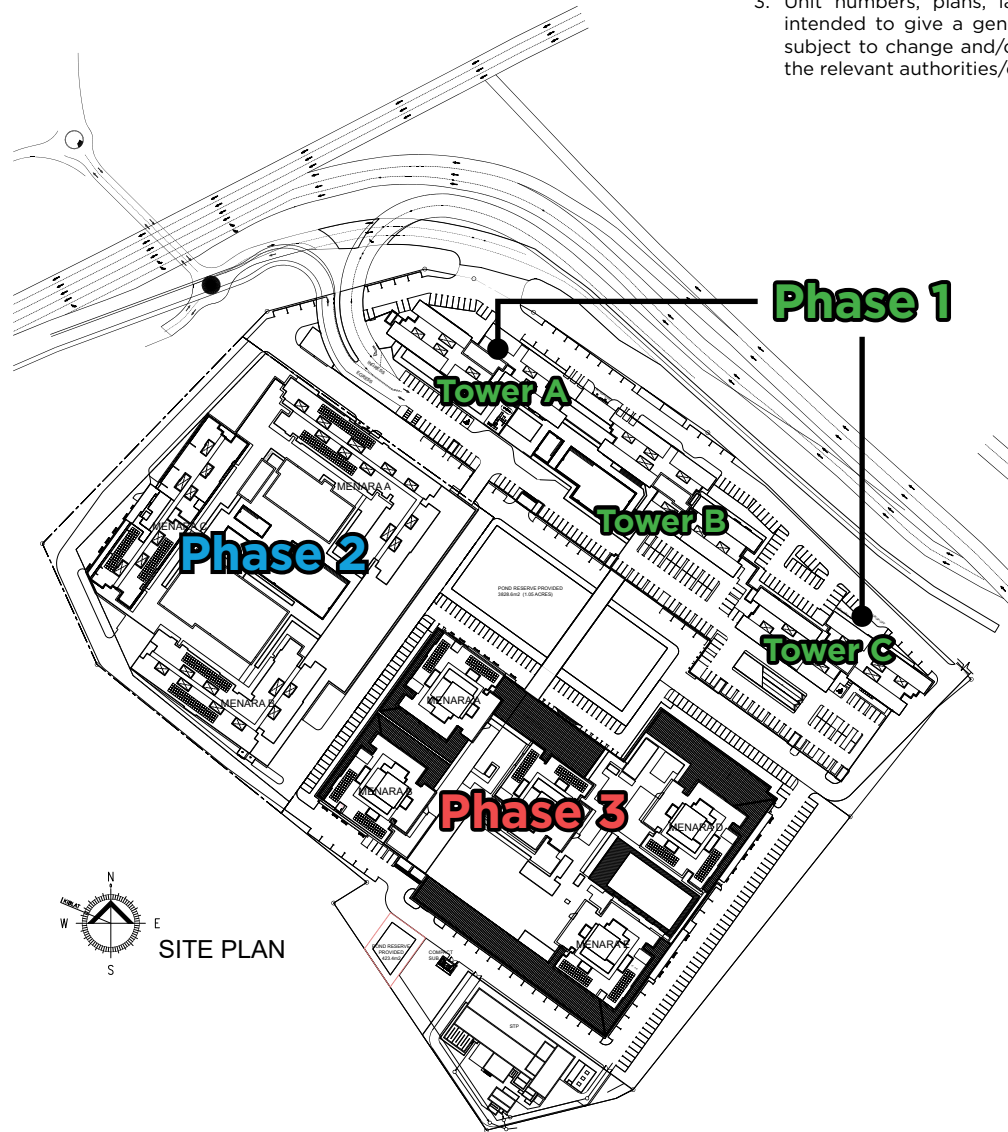
CONFIDENTIAL. FOR INTERNAL REFERENCE ONLY. PLEASE DO NOT DISTRIBUTE.

LAST UPDATED ON 9 SEPTEMBER 2024.



<b>QUICK LINKS</b>
<b>TOWER A</b>
Storey Chart
Ground Floor
1 <sup>st</sup> Floor
2 <sup>nd</sup> Floor
3 <sup>rd</sup> Floor
4 <sup>th</sup> Floor
5 <sup>th</sup> Floor
6 <sup>th</sup> Floor
Typical Floor
Break Tank Floor
<b>TOWER B</b>
Storey Chart
Ground Floor
1 <sup>st</sup> Floor
2 <sup>nd</sup> Floor
3 <sup>rd</sup> Floor
4 <sup>th</sup> Floor
5 <sup>th</sup> Floor
6 <sup>th</sup> Floor
7 <sup>th</sup> Floor
Typical Floor
Break Tank Floor
<b>TOWER C</b>
Storey Chart
Ground Floor
1 <sup>st</sup> Floor
2 <sup>nd</sup> Floor
3 <sup>rd</sup> Floor
4 <sup>th</sup> Floor
5 <sup>th</sup> Floor
6 <sup>th</sup> Floor
7 <sup>th</sup> Floor
Typical Floor
Break Tank Floor
<b>UNIT PLAN</b>
4TH SCHEDULE

# SITE PLAN



**NOTE:**

1. Not to scale.
2. The unit number is an indicative number only and does not represent the house numbering in the actual address.
3. Unit numbers, plans, layouts and other information contained herein are intended to give a general indication of the proposed design only and are subject to change and/or amendments as may be required or as directed by the relevant authorities/engineer(s)/architect.

**QUICK LINKS**

**TOWER A**

Storey Chart

Ground Floor

1<sup>st</sup> Floor

2<sup>nd</sup> Floor

3<sup>rd</sup> Floor

4<sup>th</sup> Floor

5<sup>th</sup> Floor

6<sup>th</sup> Floor

Typical Floor

Break Tank Floor

**TOWER B**

Storey Chart

Ground Floor

1<sup>st</sup> Floor

2<sup>nd</sup> Floor

3<sup>rd</sup> Floor

4<sup>th</sup> Floor

5<sup>th</sup> Floor

6<sup>th</sup> Floor

7<sup>th</sup> Floor

Typical Floor

Break Tank Floor

**TOWER C**

Storey Chart

Ground Floor

1<sup>st</sup> Floor

2<sup>nd</sup> Floor

3<sup>rd</sup> Floor

4<sup>th</sup> Floor

5<sup>th</sup> Floor

6<sup>th</sup> Floor

7<sup>th</sup> Floor

Typical Floor

Break Tank Floor

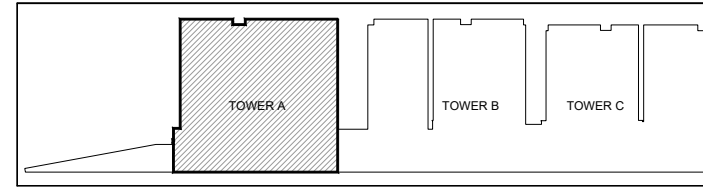
UNIT PLAN

4TH SCHEDULE

**NOTE:**

1. Not to scale.
2. The unit number is an indicative number only and does not represent the house numbering in the actual address.
3. Unit numbers, plans, layouts and other information contained herein are intended to give a general indication of the proposed design only and are subject to change and/or amendments as may be required or as directed by the relevant authorities/engineer(s)/architect.

# TOWER A STOREY CHART



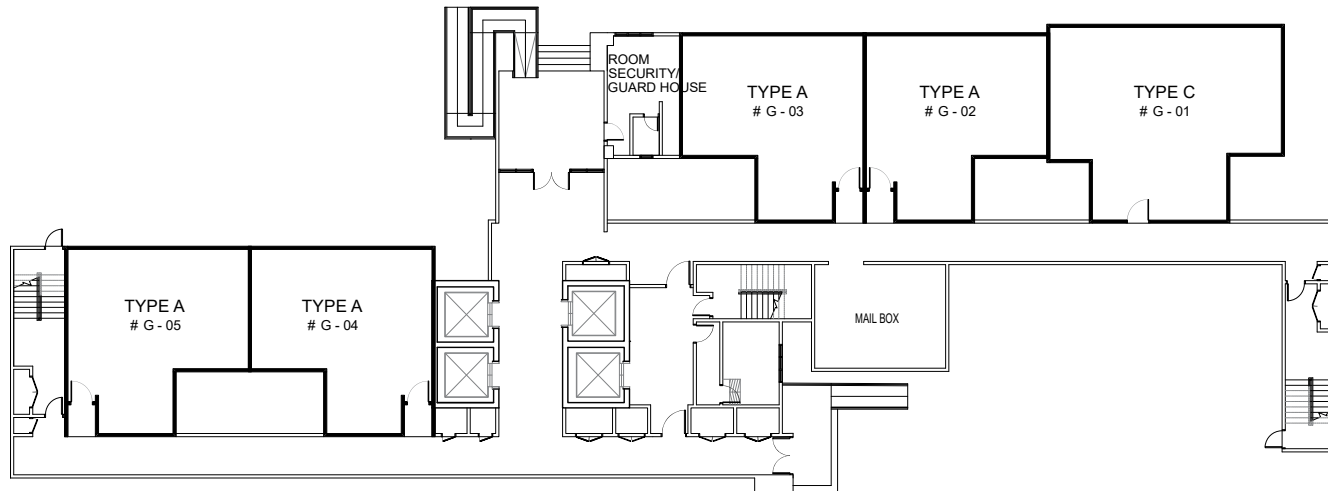
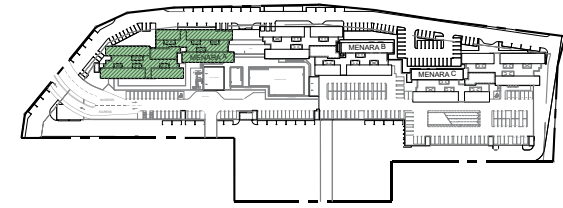
ROOF LEVEL		MENARA A																	
23TH FLOOR	# 23-03 TYPE B	# 23-02 TYPE B	# 23-01 TYPE C	# 23-16 TYPE C	# 23-15 TYPE B	# 23-14 TYPE B	# 23-13 TYPE C	# 23-12 TYPE C	# 23-11 TYPE A	# 23-10 TYPE A	# 23-09 TYPE A	# 23-08 TYPE A	# 23-07 TYPE A	# 23-06 TYPE A	# 23-05 TYPE C	# 23-04 TYPE C			
22TH FLOOR	# 22-03 TYPE B	# 22-02 TYPE B	# 22-01 TYPE C	# 22-16 TYPE C	# 22-15 TYPE B	# 22-14 TYPE B	# 22-13 TYPE C	# 22-12 TYPE C	# 22-11 TYPE A	# 22-10 TYPE A	# 22-09 TYPE A	# 22-08 TYPE A	# 22-07 TYPE A	# 22-06 TYPE A	# 22-05 TYPE C	# 22-04 TYPE C			
21TH FLOOR	# 21-03 TYPE B	# 21-02 TYPE B	# 21-01 TYPE C	# 21-16 TYPE C	# 21-15 TYPE B	# 21-14 TYPE B	# 21-13 TYPE C	# 21-12 TYPE C	# 21-11 TYPE A	# 21-10 TYPE A	# 21-09 TYPE A	# 21-08 TYPE A	# 21-07 TYPE A	# 21-06 TYPE A	# 21-05 TYPE C	# 21-04 TYPE C			
20TH FLOOR	# 20-03 TYPE B	# 20-02 TYPE B	# 20-01 TYPE C	# 20-16 TYPE C	# 20-15 TYPE B	# 20-14 TYPE B	# 20-13 TYPE C	# 20-12 TYPE C	# 20-11 TYPE A	# 20-10 TYPE A	# 20-09 TYPE A	# 20-08 TYPE A	# 20-07 TYPE A	# 20-06 TYPE A	# 20-05 TYPE C	# 20-04 TYPE C			
19TH FLOOR	# 19-03 TYPE B	# 19-02 TYPE B	# 19-01 TYPE C	# 19-16 TYPE C	# 19-15 TYPE B	# 19-14 TYPE B	# 19-13 TYPE C	# 19-12 TYPE C	# 19-11 TYPE A	# 19-10 TYPE A	# 19-09 TYPE A	# 19-08 TYPE A	# 19-07 TYPE A	# 19-06 TYPE A	# 19-05 TYPE C	# 19-04 TYPE C			
18TH FLOOR (break tank)	# 18-03 TYPE B	# 18-02 TYPE B	# 18-01 TYPE C	# 18-15 TYPE C	# 18-14 TYPE B	# 18-13 TYPE B	# 18-12 TYPE C	# 18-11 TYPE C	# 18-10 TYPE A	# 18-09 TYPE A	PUMP ROOM	# 18-08 TYPE A	# 18-07 TYPE A	# 18-06 TYPE A	# 18-05 TYPE C	# 18-04 TYPE C			
17TH FLOOR	# 17-03 TYPE B	# 17-02 TYPE B	# 17-01 TYPE C	# 17-16 TYPE C	# 17-15 TYPE B	# 17-14 TYPE B	# 17-13 TYPE C	# 17-12 TYPE C	# 17-11 TYPE A	# 17-10 TYPE A	# 17-09 TYPE A	# 17-08 TYPE A	# 17-07 TYPE A	# 17-06 TYPE A	# 17-05 TYPE C	# 17-04 TYPE C			
16TH FLOOR	# 16-03 TYPE B	# 16-02 TYPE B	# 16-01 TYPE C	# 16-16 TYPE C	# 16-15 TYPE B	# 16-14 TYPE B	# 16-13 TYPE C	# 16-12 TYPE C	# 16-11 TYPE A	# 16-10 TYPE A	# 16-09 TYPE A	# 16-08 TYPE A	# 16-07 TYPE A	# 16-06 TYPE A	# 16-05 TYPE C	# 16-04 TYPE C			
15TH FLOOR	# 15-03 TYPE B	# 15-02 TYPE B	# 15-01 TYPE C	# 15-16 TYPE C	# 15-15 TYPE B	# 15-14 TYPE B	# 15-13 TYPE C	# 15-12 TYPE C	# 15-11 TYPE A	# 15-10 TYPE A	# 15-09 TYPE A	# 15-08 TYPE A	# 15-07 TYPE A	# 15-06 TYPE A	# 15-05 TYPE C	# 15-04 TYPE C			
14TH FLOOR	# 14-03 TYPE B	# 14-02 TYPE B	# 14-01 TYPE C	# 14-16 TYPE C	# 14-15 TYPE B	# 14-14 TYPE B	# 14-13 TYPE C	# 14-12 TYPE C	# 14-11 TYPE A	# 14-10 TYPE A	# 14-09 TYPE A	# 14-08 TYPE A	# 14-07 TYPE A	# 14-06 TYPE A	# 14-05 TYPE C	# 14-04 TYPE C			
13TH FLOOR	# 13-03 TYPE B	# 13-02 TYPE B	# 13-01 TYPE C	# 13-16 TYPE C	# 13-15 TYPE B	# 13-14 TYPE B	# 13-13 TYPE C	# 13-12 TYPE C	# 13-11 TYPE A	# 13-10 TYPE A	# 13-09 TYPE A	# 13-08 TYPE A	# 13-07 TYPE A	# 13-06 TYPE A	# 13-05 TYPE C	# 13-04 TYPE C			
12TH FLOOR	# 12-03 TYPE B	# 12-02 TYPE B	# 12-01 TYPE C	# 12-16 TYPE C	# 12-15 TYPE B	# 12-14 TYPE B	# 12-13 TYPE C	# 12-12 TYPE C	# 12-11 TYPE A	# 12-10 TYPE A	# 12-09 TYPE A	# 12-08 TYPE A	# 12-07 TYPE A	# 12-06 TYPE A	# 12-05 TYPE C	# 12-04 TYPE C			
11TH FLOOR	# 11-03 TYPE B	# 11-02 TYPE B	# 11-01 TYPE C	# 11-16 TYPE C	# 11-15 TYPE B	# 11-14 TYPE B	# 11-13 TYPE C	# 11-12 TYPE C	# 11-11 TYPE A	# 11-10 TYPE A	# 11-09 TYPE A	# 11-08 TYPE A	# 11-07 TYPE A	# 11-06 TYPE A	# 11-05 TYPE C	# 11-04 TYPE C			
10TH FLOOR	# 10-03 TYPE B	# 10-02 TYPE B	# 10-01 TYPE C	# 10-16 TYPE C	# 10-15 TYPE B	# 10-14 TYPE B	# 10-13 TYPE C	# 10-12 TYPE C	# 10-11 TYPE A	# 10-10 TYPE A	# 10-09 TYPE A	# 10-08 TYPE A	# 10-07 TYPE A	# 10-06 TYPE A	# 10-05 TYPE C	# 10-04 TYPE C			
9TH FLOOR	# 09-03 TYPE B	# 09-02 TYPE B	# 09-01 TYPE C	# 09-16 TYPE C	# 09-15 TYPE B	# 09-14 TYPE B	# 09-13 TYPE C	# 09-12 TYPE C	# 09-11 TYPE A	# 09-10 TYPE A	# 09-09 TYPE A	# 09-08 TYPE A	# 09-07 TYPE A	# 09-06 TYPE A	# 09-05 TYPE C	# 09-04 TYPE C			
8TH FLOOR	# 08-03 TYPE B	# 08-02 TYPE B	# 08-01 TYPE C	# 08-16 TYPE C	# 08-15 TYPE B	# 08-14 TYPE B	# 08-13 TYPE C	# 08-12 TYPE C	# 08-11 TYPE A	# 08-10 TYPE A	# 08-09 TYPE A	# 08-08 TYPE A	# 08-07 TYPE A	# 08-06 TYPE A	# 08-05 TYPE C	# 08-04 TYPE C			
7TH FLOOR	# 07-03 TYPE B	# 07-02 TYPE B	# 07-01 TYPE C	# 07-16 TYPE C	# 07-15 TYPE B	# 07-14 TYPE B	# 07-13 TYPE C	# 07-12 TYPE C	# 07-11 TYPE A	# 07-10 TYPE A	# 07-09 TYPE A	# 07-08 TYPE A	# 07-07 TYPE A	# 07-06 TYPE A	# 07-05 TYPE C	# 07-04 TYPE C			
6TH FLOOR	# 06-03 TYPE B	# 06-02 TYPE B	# 06-01 TYPE C	CARPARK					# 06-11 TYPE A	# 06-09 TYPE A	# 06-08 TYPE A	# 06-07 TYPE A	# 06-06 TYPE A	# 06-05 TYPE C	# 06-04 TYPE C				
5TH FLOOR	CARPARK	FACILITIES		CARPARK					# 05-08 TYPE A	# 05-07 TYPE A	# 05-06 TYPE A	# 05-05 TYPE A	# 05-04 TYPE A	# 05-03 TYPE A	# 05-02 TYPE C	# 05-01 TYPE C			
4TH FLOOR	CARPARK	CARPARK		SHOP LOT					# 04-08 TYPE A	# 04-07 TYPE A	# 04-06 TYPE A	# 04-05 TYPE A	# 04-04 TYPE A	# 04-03 TYPE A	# 04-02 TYPE C	# 04-01 TYPE C			
3RD FLOOR	CARPARK	CARPARK		CARPARK					# 03-08 TYPE A	# 03-07 TYPE A	# 03-06 TYPE A	# 03-05 TYPE A	# 03-04 TYPE A	# 03-03 TYPE A	# 03-02 TYPE C	# 03-01 TYPE C			
2ND FLOOR	CARPARK	CARPARK		CARPARK					# 02-08 TYPE A	# 02-07 TYPE A	# 02-06 TYPE A	# 02-05 TYPE A	# 02-04 TYPE A	# 02-03 TYPE A	# 02-02 TYPE C	# 02-01 TYPE C			
1ST FLOOR	CARPARK	CARPARK		CARPARK					# 01-07 TYPE A	# 01-06 TYPE A	# 01-05 TYPE A	SERVICES	# 01-04 TYPE A	# 01-03 TYPE A	# 01-02 TYPE C	# 01-01 TYPE C			
GROUND FLOOR	CARPARK	CARPARK		CARPARK					# 01-07 TYPE A	# G-05 TYPE A	# G-04 TYPE A	SERVICES	# G-03 TYPE A	# G-02 TYPE A	# G-01 TYPE C	CARPARK			

QUICK LINKS	
<b>TOWER A</b>	
Storey Chart	
Ground Floor	
1 <sup>st</sup> Floor	
2 <sup>nd</sup> Floor	
3 <sup>rd</sup> Floor	
4 <sup>th</sup> Floor	
5 <sup>th</sup> Floor	
6 <sup>th</sup> Floor	
Typical Floor	
Break Tank Floor	
<b>TOWER B</b>	
Storey Chart	
Ground Floor	
1 <sup>st</sup> Floor	
2 <sup>nd</sup> Floor	
3 <sup>rd</sup> Floor	
4 <sup>th</sup> Floor	
5 <sup>th</sup> Floor	
6 <sup>th</sup> Floor	
7 <sup>th</sup> Floor	
Typical Floor	
Break Tank Floor	
<b>TOWER C</b>	
Storey Chart	
Ground Floor	
1 <sup>st</sup> Floor	
2 <sup>nd</sup> Floor	
3 <sup>rd</sup> Floor	
4 <sup>th</sup> Floor	
5 <sup>th</sup> Floor	
6 <sup>th</sup> Floor	
7 <sup>th</sup> Floor	
Typical Floor	
Break Tank Floor	
<b>UNIT PLAN</b>	
4TH SCHEDULE	

**NOTE:**

- Not to scale.
- The unit number is an indicative number only and does not represent the house numbering in the actual address.
- Unit numbers, plans, layouts and other information contained herein are intended to give a general indication of the proposed design only and are subject to change and/or amendments as may be required or as directed by the relevant authorities/engineer(s)/architect.

# TOWER A LEVEL GROUND FLOOR



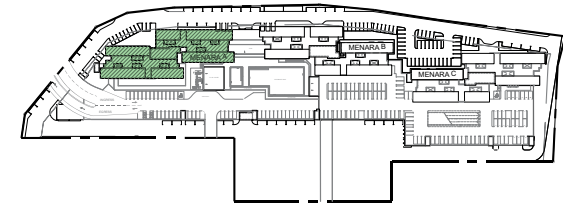
TOWER A  
LEVEL GROUND FLOOR

<b>QUICK LINKS</b>
<b>TOWER A</b>
Storey Chart
Ground Floor
1 <sup>st</sup> Floor
2 <sup>nd</sup> Floor
3 <sup>rd</sup> Floor
4 <sup>th</sup> Floor
5 <sup>th</sup> Floor
6 <sup>th</sup> Floor
Typical Floor
Break Tank Floor
<b>TOWER B</b>
Storey Chart
Ground Floor
1 <sup>st</sup> Floor
2 <sup>nd</sup> Floor
3 <sup>rd</sup> Floor
4 <sup>th</sup> Floor
5 <sup>th</sup> Floor
6 <sup>th</sup> Floor
7 <sup>th</sup> Floor
Typical Floor
Break Tank Floor
<b>TOWER C</b>
Storey Chart
Ground Floor
1 <sup>st</sup> Floor
2 <sup>nd</sup> Floor
3 <sup>rd</sup> Floor
4 <sup>th</sup> Floor
5 <sup>th</sup> Floor
6 <sup>th</sup> Floor
7 <sup>th</sup> Floor
Typical Floor
Break Tank Floor
<b>UNIT PLAN</b>
<b>4TH SCHEDULE</b>

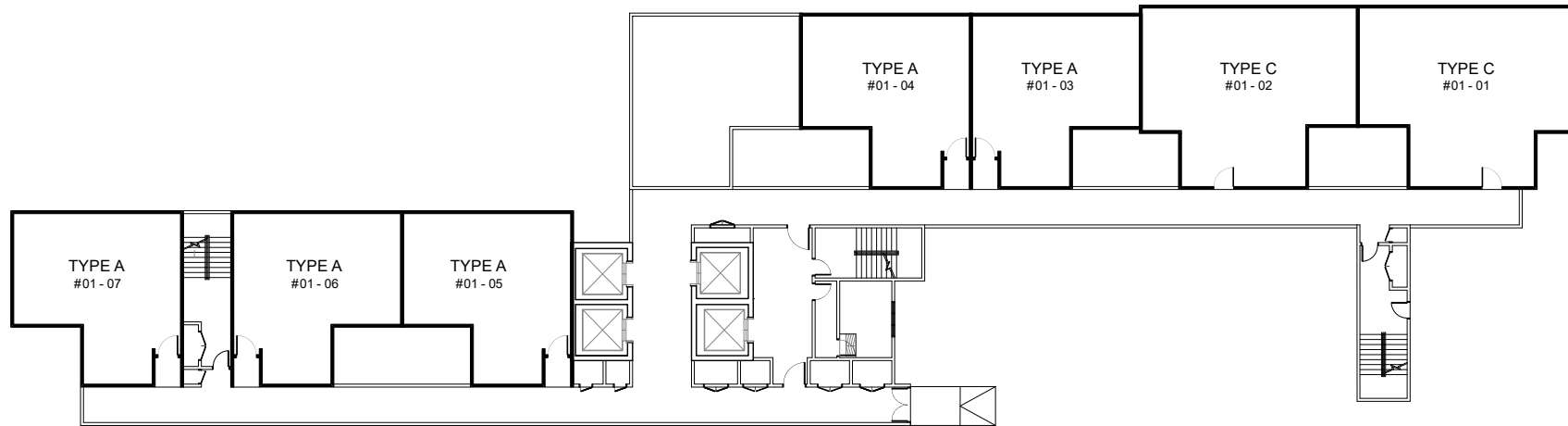
**NOTE:**


1. Not to scale.
2. The unit number is an indicative number only and does not represent the house numbering in the actual address.
3. Unit numbers, plans, layouts and other information contained herein are intended to give a general indication of the proposed design only and are subject to change and/or amendments as may be required or as directed by the relevant authorities/engineer(s)/architect.

# TOWER A LEVEL 1<sup>ST</sup> FLOOR



QUICK LINKS	
<b>TOWER A</b>	
Storey Chart	
Ground Floor	
1 <sup>st</sup> Floor	
2 <sup>nd</sup> Floor	
3 <sup>rd</sup> Floor	
4 <sup>th</sup> Floor	
5 <sup>th</sup> Floor	
6 <sup>th</sup> Floor	
Typical Floor	
Break Tank Floor	
<b>TOWER B</b>	
Storey Chart	
Ground Floor	
1 <sup>st</sup> Floor	
2 <sup>nd</sup> Floor	
3 <sup>rd</sup> Floor	
4 <sup>th</sup> Floor	
5 <sup>th</sup> Floor	
6 <sup>th</sup> Floor	
7 <sup>th</sup> Floor	
Typical Floor	
Break Tank Floor	
<b>TOWER C</b>	
Storey Chart	
Ground Floor	
1 <sup>st</sup> Floor	
2 <sup>nd</sup> Floor	
3 <sup>rd</sup> Floor	
4 <sup>th</sup> Floor	
5 <sup>th</sup> Floor	
6 <sup>th</sup> Floor	
7 <sup>th</sup> Floor	
Typical Floor	
Break Tank Floor	
<b>UNIT PLAN</b>	
4TH SCHEDULE	



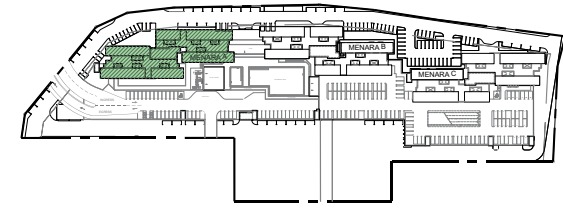
U  TOWER A  
LEVEL 1<sup>ST</sup> FLOOR

ARAH KIBLAT  
292/00/00

**NOTE:**

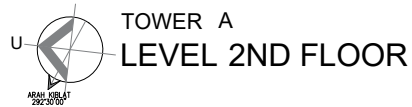
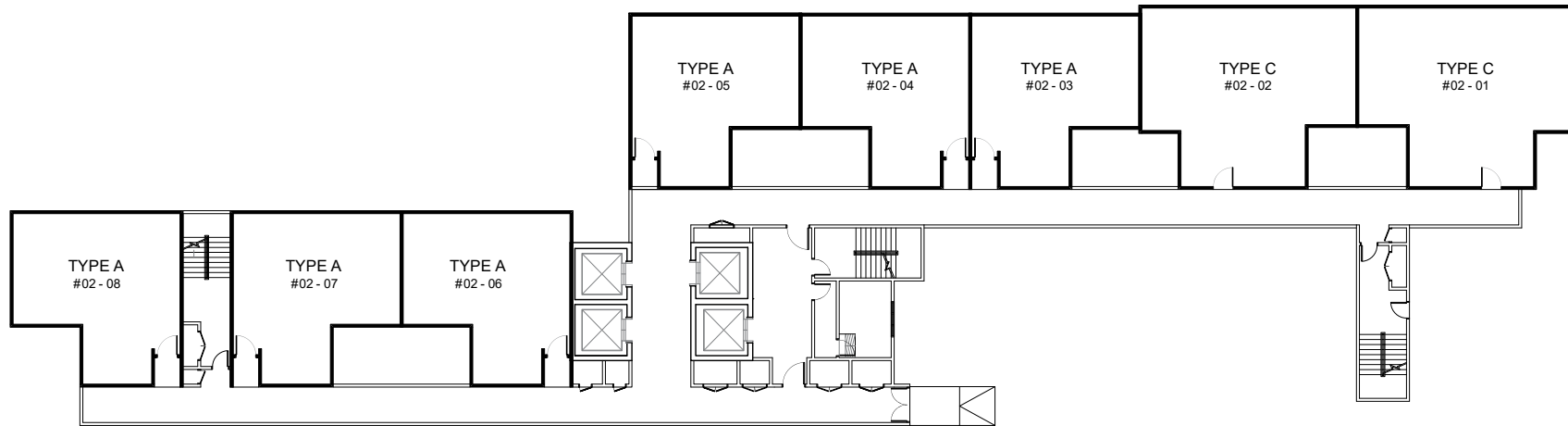
1. Not to scale.
2. The unit number is an indicative number only and does not represent the house numbering in the actual address.
3. Unit numbers, plans, layouts and other information contained herein are intended to give a general indication of the proposed design only and are subject to change and/or amendments as may be required or as directed by the relevant authorities/engineer(s)/architect.

# TOWER A LEVEL 2<sup>ND</sup> FLOOR



**QUICK LINKS**

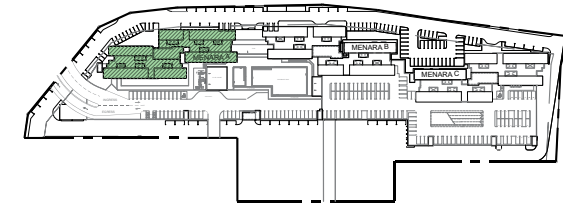
- TOWER A**
- Storey Chart
- Ground Floor
- 1<sup>st</sup> Floor
- 2<sup>nd</sup> Floor
- 3<sup>rd</sup> Floor
- 4<sup>th</sup> Floor
- 5<sup>th</sup> Floor
- 6<sup>th</sup> Floor
- Typical Floor
- Break Tank Floor
- TOWER B**
- Storey Chart
- Ground Floor
- 1<sup>st</sup> Floor
- 2<sup>nd</sup> Floor
- 3<sup>rd</sup> Floor
- 4<sup>th</sup> Floor
- 5<sup>th</sup> Floor
- 6<sup>th</sup> Floor
- 7<sup>th</sup> Floor
- Typical Floor
- Break Tank Floor
- TOWER C**
- Storey Chart
- Ground Floor
- 1<sup>st</sup> Floor
- 2<sup>nd</sup> Floor
- 3<sup>rd</sup> Floor
- 4<sup>th</sup> Floor
- 5<sup>th</sup> Floor
- 6<sup>th</sup> Floor
- 7<sup>th</sup> Floor
- Typical Floor
- Break Tank Floor
- UNIT PLAN**
- 4TH SCHEDULE**



**NOTE:**

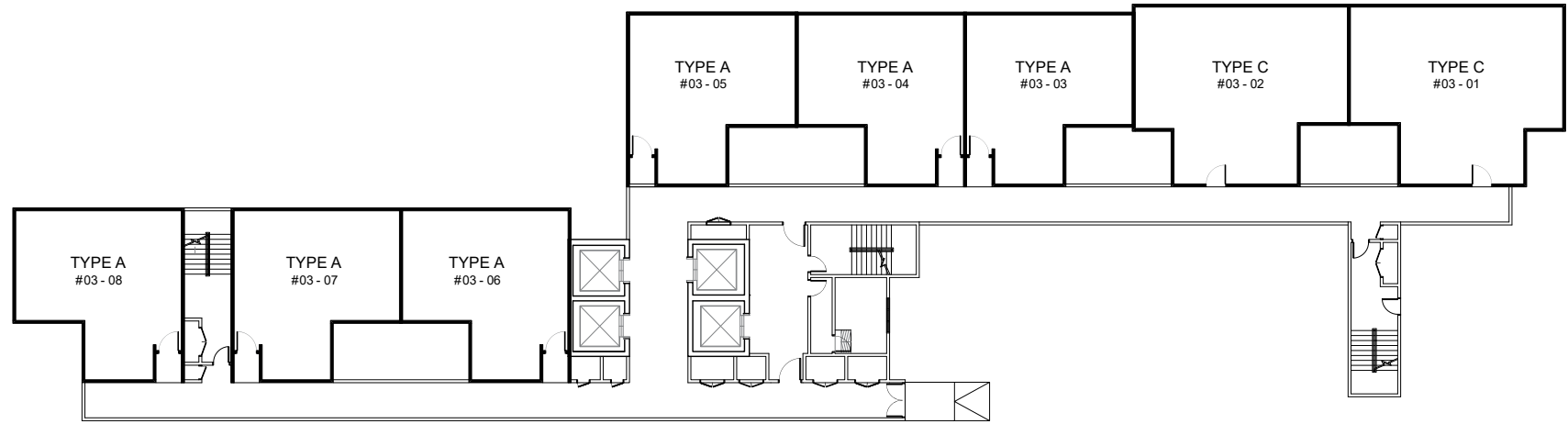
1. Not to scale.
2. The unit number is an indicative number only and does not represent the house numbering in the actual address.
3. Unit numbers, plans, layouts and other information contained herein are intended to give a general indication of the proposed design only and are subject to change and/or amendments as may be required or as directed by the relevant authorities/engineer(s)/architect.


# TOWER A LEVEL 3<sup>RD</sup> FLOOR



**QUICK LINKS**

- TOWER A**
- Storey Chart
- Ground Floor
- 1<sup>st</sup> Floor
- 2<sup>nd</sup> Floor
- 3<sup>rd</sup> Floor
- 4<sup>th</sup> Floor
- 5<sup>th</sup> Floor
- 6<sup>th</sup> Floor
- Typical Floor
- Break Tank Floor
- TOWER B**
- Storey Chart
- Ground Floor
- 1<sup>st</sup> Floor
- 2<sup>nd</sup> Floor
- 3<sup>rd</sup> Floor
- 4<sup>th</sup> Floor
- 5<sup>th</sup> Floor
- 6<sup>th</sup> Floor
- 7<sup>th</sup> Floor
- Typical Floor
- Break Tank Floor
- TOWER C**
- Storey Chart
- Ground Floor
- 1<sup>st</sup> Floor
- 2<sup>nd</sup> Floor
- 3<sup>rd</sup> Floor
- 4<sup>th</sup> Floor
- 5<sup>th</sup> Floor
- 6<sup>th</sup> Floor
- 7<sup>th</sup> Floor
- Typical Floor
- Break Tank Floor
- UNIT PLAN**
- 4TH SCHEDULE**

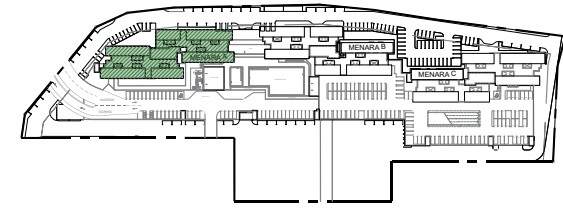


 TOWER A  
LEVEL 3<sup>RD</sup> FLOOR

**NOTE:**

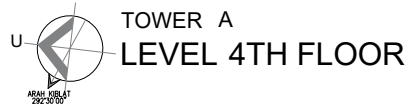
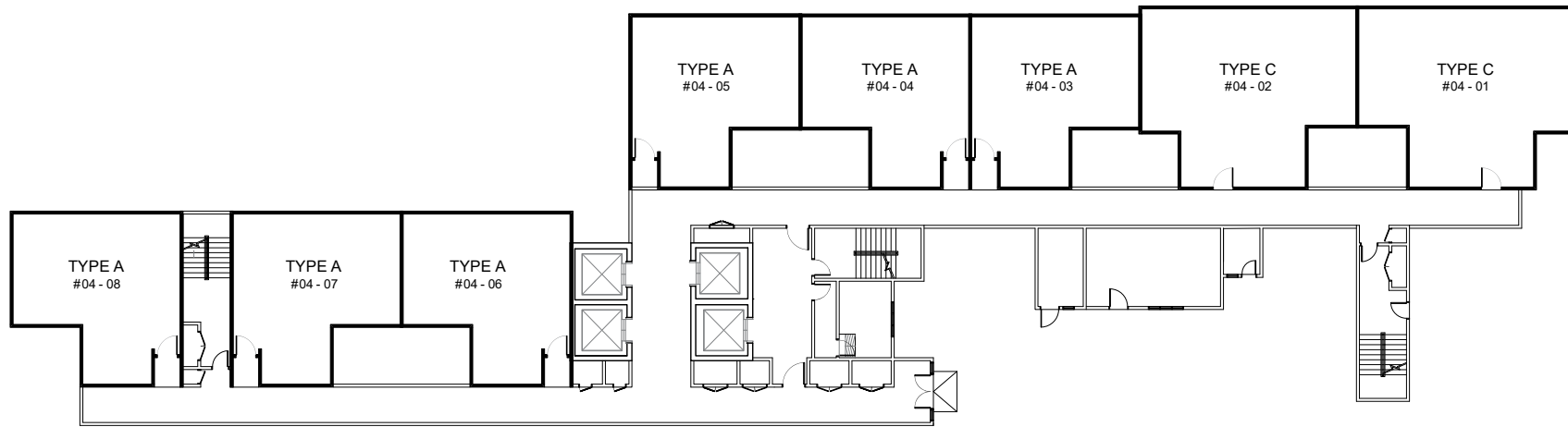
1. Not to scale.
2. The unit number is an indicative number only and does not represent the house numbering in the actual address.
3. Unit numbers, plans, layouts and other information contained herein are intended to give a general indication of the proposed design only and are subject to change and/or amendments as may be required or as directed by the relevant authorities/engineer(s)/architect.

# TOWER A LEVEL 4<sup>TH</sup> FLOOR



**QUICK LINKS**

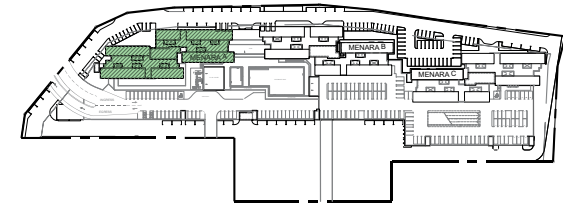
- TOWER A**
- Storey Chart
- Ground Floor
- 1<sup>st</sup> Floor
- 2<sup>nd</sup> Floor
- 3<sup>rd</sup> Floor
- 4<sup>th</sup> Floor
- 5<sup>th</sup> Floor
- 6<sup>th</sup> Floor
- Typical Floor
- Break Tank Floor
- TOWER B**
- Storey Chart
- Ground Floor
- 1<sup>st</sup> Floor
- 2<sup>nd</sup> Floor
- 3<sup>rd</sup> Floor
- 4<sup>th</sup> Floor
- 5<sup>th</sup> Floor
- 6<sup>th</sup> Floor
- 7<sup>th</sup> Floor
- Typical Floor
- Break Tank Floor
- TOWER C**
- Storey Chart
- Ground Floor
- 1<sup>st</sup> Floor
- 2<sup>nd</sup> Floor
- 3<sup>rd</sup> Floor
- 4<sup>th</sup> Floor
- 5<sup>th</sup> Floor
- 6<sup>th</sup> Floor
- 7<sup>th</sup> Floor
- Typical Floor
- Break Tank Floor
- UNIT PLAN**
- 4TH SCHEDULE**



**NOTE:**

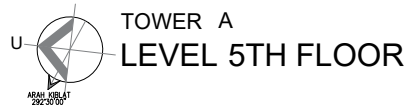
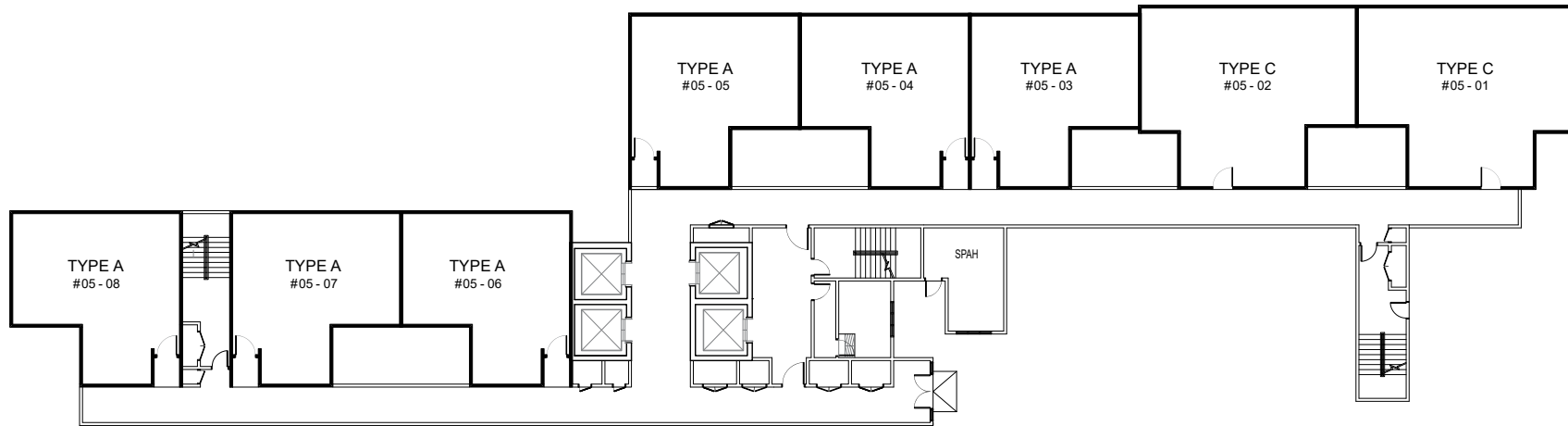
1. Not to scale.
2. The unit number is an indicative number only and does not represent the house numbering in the actual address.
3. Unit numbers, plans, layouts and other information contained herein are intended to give a general indication of the proposed design only and are subject to change and/or amendments as may be required or as directed by the relevant authorities/engineer(s)/architect.

# TOWER A LEVEL 5<sup>TH</sup> FLOOR



**QUICK LINKS**

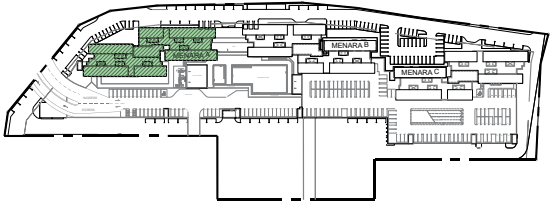
- TOWER A**
- Storey Chart
- Ground Floor
- 1<sup>st</sup> Floor
- 2<sup>nd</sup> Floor
- 3<sup>rd</sup> Floor
- 4<sup>th</sup> Floor
- 5<sup>th</sup> Floor
- 6<sup>th</sup> Floor
- Typical Floor
- Break Tank Floor
- TOWER B**
- Storey Chart
- Ground Floor
- 1<sup>st</sup> Floor
- 2<sup>nd</sup> Floor
- 3<sup>rd</sup> Floor
- 4<sup>th</sup> Floor
- 5<sup>th</sup> Floor
- 6<sup>th</sup> Floor
- 7<sup>th</sup> Floor
- Typical Floor
- Break Tank Floor
- TOWER C**
- Storey Chart
- Ground Floor
- 1<sup>st</sup> Floor
- 2<sup>nd</sup> Floor
- 3<sup>rd</sup> Floor
- 4<sup>th</sup> Floor
- 5<sup>th</sup> Floor
- 6<sup>th</sup> Floor
- 7<sup>th</sup> Floor
- Typical Floor
- Break Tank Floor
- UNIT PLAN**
- 4TH SCHEDULE**



**NOTE:**

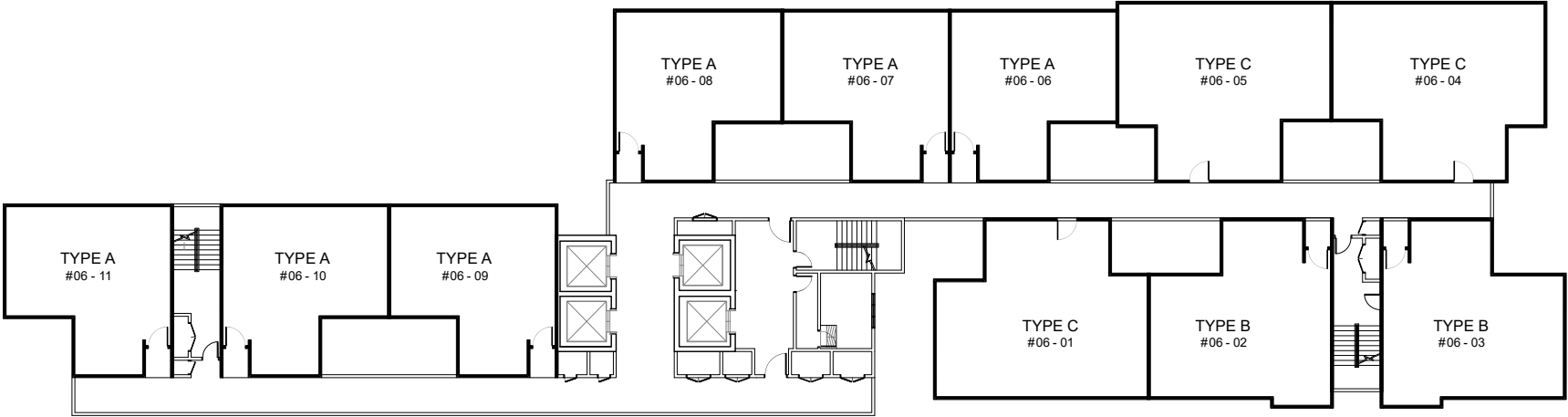
1. Not to scale.
2. The unit number is an indicative number only and does not represent the house numbering in the actual address.
3. Unit numbers, plans, layouts and other information contained herein are intended to give a general indication of the proposed design only and are subject to change and/or amendments as may be required or as directed by the relevant authorities/engineer(s)/architect.


# TOWER A LEVEL 6<sup>TH</sup> FLOOR



**QUICK LINKS**

- TOWER A**
- Storey Chart
- Ground Floor
- 1<sup>st</sup> Floor
- 2<sup>nd</sup> Floor
- 3<sup>rd</sup> Floor
- 4<sup>th</sup> Floor
- 5<sup>th</sup> Floor
- 6<sup>th</sup> Floor
- Typical Floor
- Break Tank Floor
- TOWER B**
- Storey Chart
- Ground Floor
- 1<sup>st</sup> Floor
- 2<sup>nd</sup> Floor
- 3<sup>rd</sup> Floor
- 4<sup>th</sup> Floor
- 5<sup>th</sup> Floor
- 6<sup>th</sup> Floor
- 7<sup>th</sup> Floor
- Typical Floor
- Break Tank Floor
- TOWER C**
- Storey Chart
- Ground Floor
- 1<sup>st</sup> Floor
- 2<sup>nd</sup> Floor
- 3<sup>rd</sup> Floor
- 4<sup>th</sup> Floor
- 5<sup>th</sup> Floor
- 6<sup>th</sup> Floor
- 7<sup>th</sup> Floor
- Typical Floor
- Break Tank Floor
- UNIT PLAN**
- 4TH SCHEDULE**



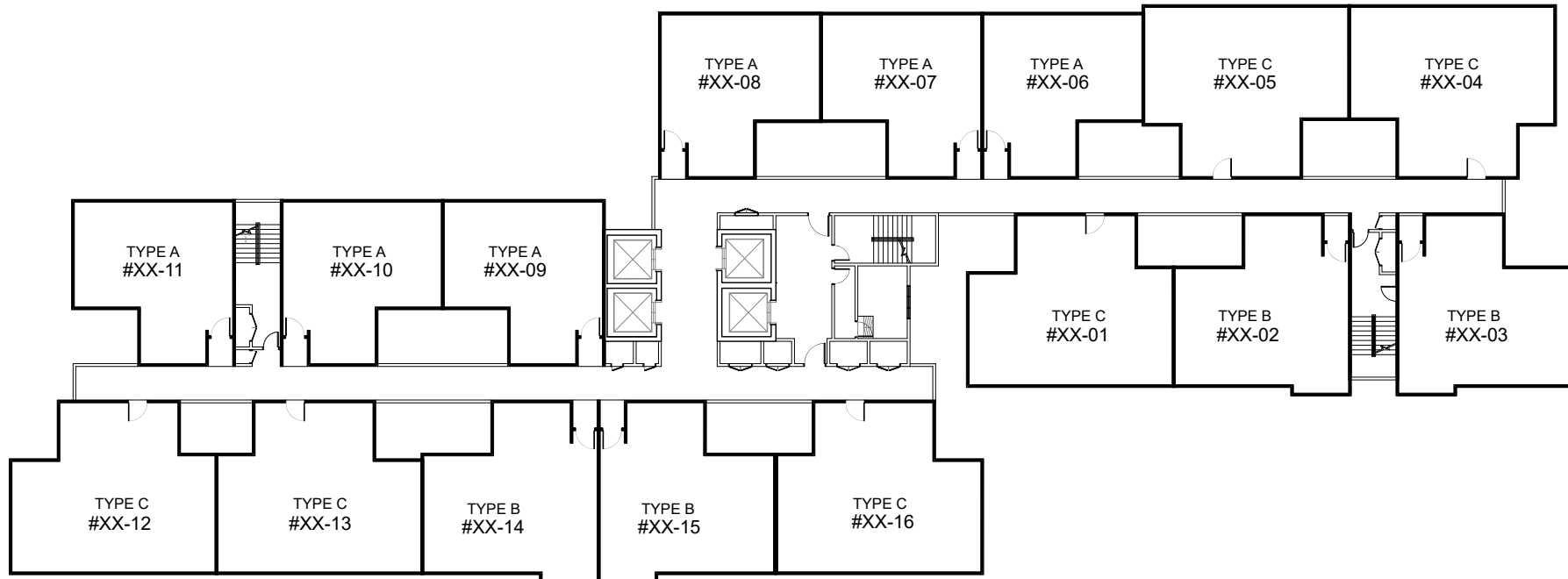
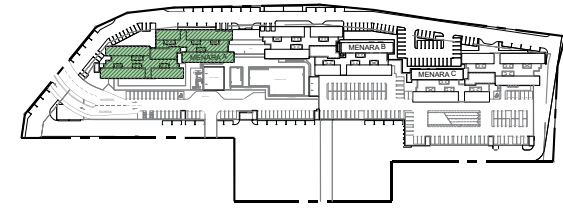
 TOWER A  
LEVEL 6<sup>TH</sup> FLOOR

**NOTE:**

1. Not to scale.
2. The unit number is an indicative number only and does not represent the house numbering in the actual address.
3. Unit numbers, plans, layouts and other information contained herein are intended to give a general indication of the proposed design only and are subject to change and/or amendments as may be required or as directed by the relevant authorities/engineer(s)/architect.


# TOWER A TYPICAL FLOOR PLAN

## LEVEL 7<sup>TH</sup> - 17<sup>TH</sup> & 19<sup>TH</sup> - 23<sup>RD</sup> FLOOR



**QUICK LINKS**

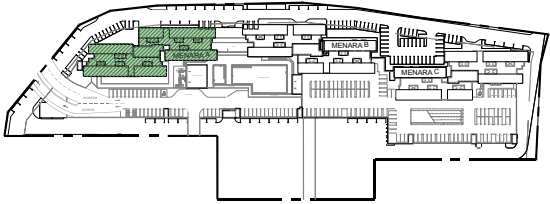
- TOWER A**
- Storey Chart
- Ground Floor
- 1<sup>st</sup> Floor
- 2<sup>nd</sup> Floor
- 3<sup>rd</sup> Floor
- 4<sup>th</sup> Floor
- 5<sup>th</sup> Floor
- 6<sup>th</sup> Floor
- Typical Floor
- Break Tank Floor
- TOWER B**
- Storey Chart
- Ground Floor
- 1<sup>st</sup> Floor
- 2<sup>nd</sup> Floor
- 3<sup>rd</sup> Floor
- 4<sup>th</sup> Floor
- 5<sup>th</sup> Floor
- 6<sup>th</sup> Floor
- 7<sup>th</sup> Floor
- Typical Floor
- Break Tank Floor
- TOWER C**
- Storey Chart
- Ground Floor
- 1<sup>st</sup> Floor
- 2<sup>nd</sup> Floor
- 3<sup>rd</sup> Floor
- 4<sup>th</sup> Floor
- 5<sup>th</sup> Floor
- 6<sup>th</sup> Floor
- 7<sup>th</sup> Floor
- Typical Floor
- Break Tank Floor
- UNIT PLAN**
- 4TH SCHEDULE**

U  TOWER A  
LEVEL 7<sup>TH</sup> - 17<sup>TH</sup> & 19<sup>TH</sup> - 23<sup>RD</sup>

**NOTE:**

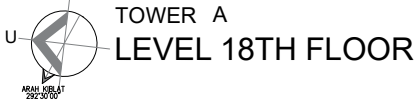
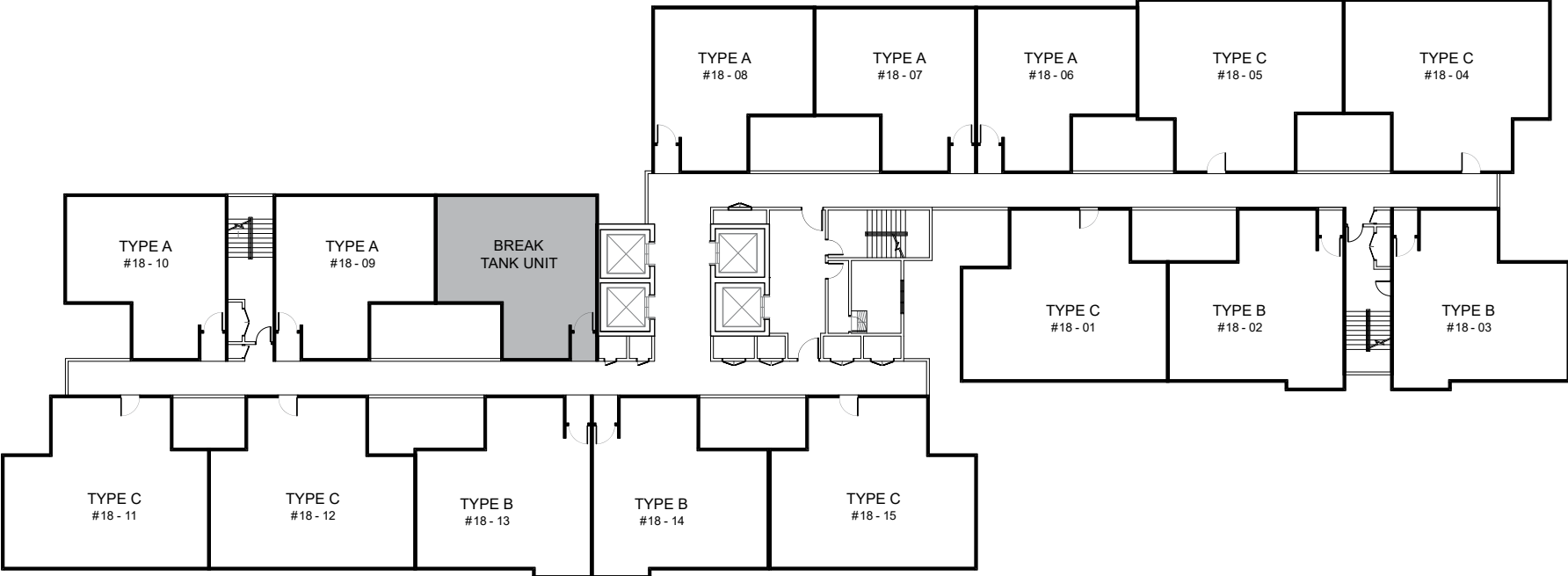
1. Not to scale.
2. The unit number is an indicative number only and does not represent the house numbering in the actual address.
3. Unit numbers, plans, layouts and other information contained herein are intended to give a general indication of the proposed design only and are subject to change and/or amendments as may be required or as directed by the relevant authorities/engineer(s)/architect.

# TOWER A BREAK TANK LEVEL LEVEL 18<sup>TH</sup> FLOOR



**QUICK LINKS**

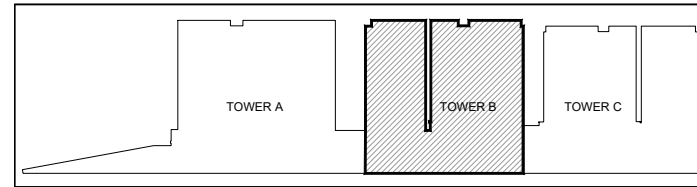
- TOWER A**
- Storey Chart
- Ground Floor
- 1<sup>st</sup> Floor
- 2<sup>nd</sup> Floor
- 3<sup>rd</sup> Floor
- 4<sup>th</sup> Floor
- 5<sup>th</sup> Floor
- 6<sup>th</sup> Floor
- Typical Floor
- Break Tank Floor
- TOWER B**
- Storey Chart
- Ground Floor
- 1<sup>st</sup> Floor
- 2<sup>nd</sup> Floor
- 3<sup>rd</sup> Floor
- 4<sup>th</sup> Floor
- 5<sup>th</sup> Floor
- 6<sup>th</sup> Floor
- 7<sup>th</sup> Floor
- Typical Floor
- Break Tank Floor
- TOWER C**
- Storey Chart
- Ground Floor
- 1<sup>st</sup> Floor
- 2<sup>nd</sup> Floor
- 3<sup>rd</sup> Floor
- 4<sup>th</sup> Floor
- 5<sup>th</sup> Floor
- 6<sup>th</sup> Floor
- 7<sup>th</sup> Floor
- Typical Floor
- Break Tank Floor
- UNIT PLAN**
- 4TH SCHEDULE**



**NOTE:**

1. Not to scale.
2. The unit number is an indicative number only and does not represent the house numbering in the actual address.
3. Unit numbers, plans, layouts and other information contained herein are intended to give a general indication of the proposed design only and are subject to change and/or amendments as may be required or as directed by the relevant authorities/engineer(s)/architect.

# TOWER B STOREY CHART



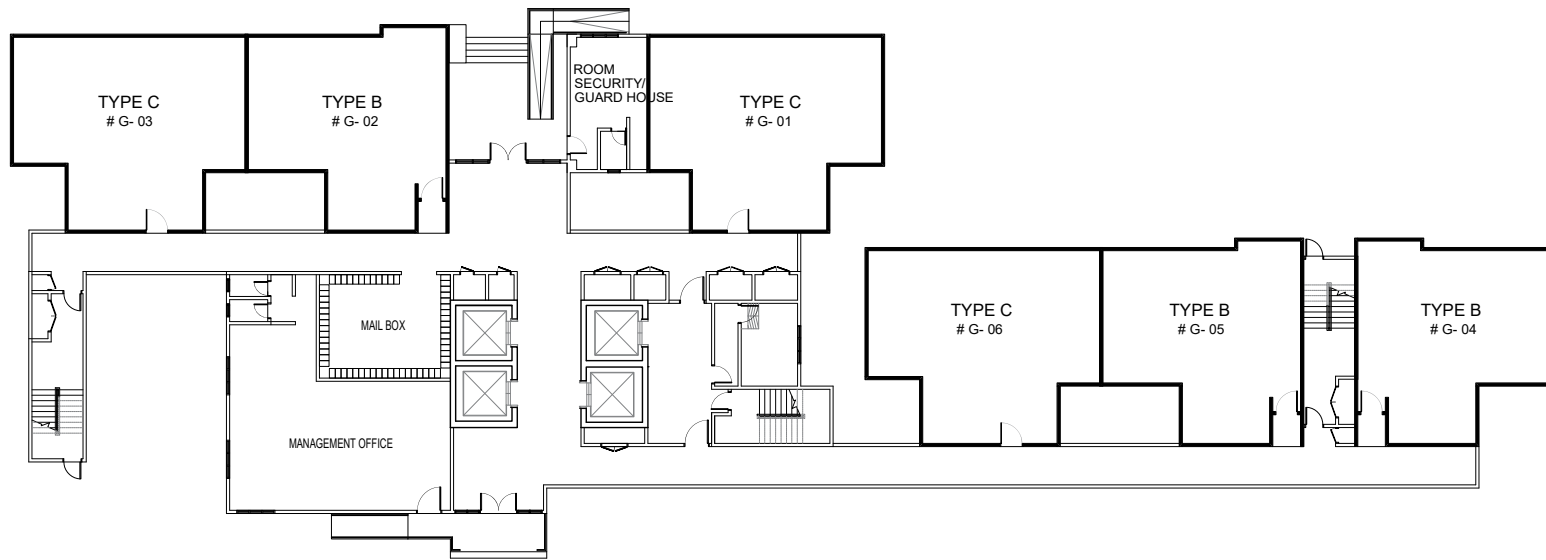
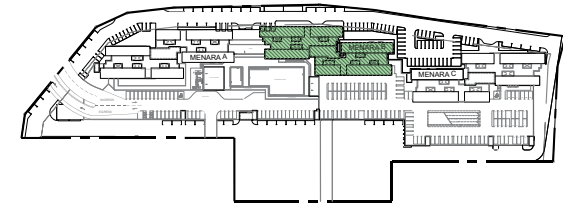
ROOF LEVEL	MENARA B																				
23TH FLOOR	# 23-13 TYPE C	# 23-12 TYPE C	# 23-11 TYPE A	# 23-10 TYPE A	# 23-09 TYPE A	# 23-08 TYPE A	# 23-07 TYPE A	# 23-06 TYPE A	# 23-05 TYPE C	# 23-04 TYPE C	# 23-03 TYPE B	# 23-02 TYPE B	# 23-01 TYPE C	# 23-16 TYPE C	# 23-15 TYPE B	# 23-14 TYPE B					
22TH FLOOR	# 22-13 TYPE C	# 22-12 TYPE C	# 22-11 TYPE A	# 22-10 TYPE A	# 22-09 TYPE A	# 22-08 TYPE A	# 22-07 TYPE A	# 22-06 TYPE A	# 22-05 TYPE C	# 22-04 TYPE C	# 22-03 TYPE B	# 22-02 TYPE B	# 22-01 TYPE C	# 22-16 TYPE C	# 22-15 TYPE B	# 22-14 TYPE B					
21TH FLOOR	# 21-13 TYPE C	# 21-12 TYPE C	# 21-11 TYPE A	# 21-10 TYPE A	# 21-09 TYPE A	# 21-08 TYPE A	# 21-07 TYPE A	# 21-06 TYPE A	# 21-05 TYPE C	# 21-04 TYPE C	# 21-03 TYPE B	# 21-02 TYPE B	# 21-01 TYPE C	# 21-16 TYPE C	# 21-15 TYPE B	# 21-14 TYPE B					
20TH FLOOR	# 20-13 TYPE C	# 20-12 TYPE C	# 20-11 TYPE A	# 20-10 TYPE A	# 20-09 TYPE A	# 20-08 TYPE A	# 20-07 TYPE A	# 20-06 TYPE A	# 20-05 TYPE C	# 20-04 TYPE C	# 20-03 TYPE B	# 20-02 TYPE B	# 20-01 TYPE C	# 20-16 TYPE C	# 20-15 TYPE B	# 20-14 TYPE B					
19TH FLOOR	# 19-13 TYPE C	# 19-12 TYPE C	# 19-11 TYPE A	# 19-10 TYPE A	# 19-09 TYPE A	# 19-08 TYPE A	# 19-07 TYPE A	# 19-06 TYPE A	# 19-05 TYPE C	# 19-04 TYPE C	# 19-03 TYPE B	# 19-02 TYPE B	# 19-01 TYPE C	# 19-16 TYPE C	# 19-15 TYPE B	# 19-14 TYPE B					
18TH FLOOR (break tank)	# 18-12 TYPE C	# 18-11 TYPE C	# 18-10 TYPE A	# 18-09 TYPE A	# 18-08 TYPE A	PUMP ROOM	# 18-07 TYPE A	# 18-06 TYPE A	# 18-05 TYPE C	# 18-04 TYPE C	# 18-03 TYPE B	# 18-02 TYPE B	# 18-01 TYPE C	# 18-15 TYPE C	# 18-14 TYPE B	# 18-13 TYPE B					
17TH FLOOR	# 17-13 TYPE C	# 17-12 TYPE C	# 17-11 TYPE A	# 17-10 TYPE A	# 17-09 TYPE A	# 17-08 TYPE A	# 17-07 TYPE A	# 17-06 TYPE A	# 17-05 TYPE C	# 17-04 TYPE C	# 17-03 TYPE B	# 17-02 TYPE B	# 17-01 TYPE C	# 17-16 TYPE C	# 17-15 TYPE B	# 17-14 TYPE B					
16TH FLOOR	# 16-13 TYPE C	# 16-12 TYPE C	# 16-11 TYPE A	# 16-10 TYPE A	# 16-09 TYPE A	# 16-08 TYPE A	# 16-07 TYPE A	# 16-06 TYPE A	# 16-05 TYPE C	# 16-04 TYPE C	# 16-03 TYPE B	# 16-02 TYPE B	# 16-01 TYPE C	# 16-16 TYPE C	# 16-15 TYPE B	# 16-14 TYPE B					
15TH FLOOR	# 15-13 TYPE C	# 15-12 TYPE C	# 15-11 TYPE A	# 15-10 TYPE A	# 15-09 TYPE A	# 15-08 TYPE A	# 15-07 TYPE A	# 15-06 TYPE A	# 15-05 TYPE C	# 15-04 TYPE C	# 15-03 TYPE B	# 15-02 TYPE B	# 15-01 TYPE C	# 15-16 TYPE C	# 15-15 TYPE B	# 15-14 TYPE B					
14TH FLOOR	# 14-13 TYPE C	# 14-12 TYPE C	# 14-11 TYPE A	# 14-10 TYPE A	# 14-09 TYPE A	# 14-08 TYPE A	# 14-07 TYPE A	# 14-06 TYPE A	# 14-05 TYPE C	# 14-04 TYPE C	# 14-03 TYPE B	# 14-02 TYPE B	# 14-01 TYPE C	# 14-16 TYPE C	# 14-15 TYPE B	# 14-14 TYPE B					
13TH FLOOR	# 13-13 TYPE C	# 13-12 TYPE C	# 13-11 TYPE A	# 13-10 TYPE A	# 13-09 TYPE A	# 13-08 TYPE A	# 13-07 TYPE A	# 13-06 TYPE A	# 13-05 TYPE C	# 13-04 TYPE C	# 13-03 TYPE B	# 13-02 TYPE B	# 13-01 TYPE C	# 13-16 TYPE C	# 13-15 TYPE B	# 13-14 TYPE B					
12TH FLOOR	# 12-13 TYPE C	# 12-12 TYPE C	# 12-11 TYPE A	# 12-10 TYPE A	# 12-09 TYPE A	# 12-08 TYPE A	# 12-07 TYPE A	# 12-06 TYPE A	# 12-05 TYPE C	# 12-04 TYPE C	# 12-03 TYPE B	# 12-02 TYPE B	# 12-01 TYPE C	# 12-16 TYPE C	# 12-15 TYPE B	# 12-14 TYPE B					
11TH FLOOR	# 11-13 TYPE C	# 11-12 TYPE C	# 11-11 TYPE A	# 11-10 TYPE A	# 11-09 TYPE A	# 11-08 TYPE A	# 11-07 TYPE A	# 11-06 TYPE A	# 11-05 TYPE C	# 11-04 TYPE C	# 11-03 TYPE B	# 11-02 TYPE B	# 11-01 TYPE C	# 11-16 TYPE C	# 11-15 TYPE B	# 11-14 TYPE B					
10TH FLOOR	# 10-13 TYPE C	# 10-12 TYPE C	# 10-11 TYPE A	# 10-10 TYPE A	# 10-09 TYPE A	# 10-08 TYPE A	# 10-07 TYPE A	# 10-06 TYPE A	# 10-05 TYPE C	# 10-04 TYPE C	# 10-03 TYPE B	# 10-02 TYPE B	# 10-01 TYPE C	# 10-16 TYPE C	# 10-15 TYPE B	# 10-14 TYPE B					
9TH FLOOR	# 09-13 TYPE C	# 09-12 TYPE C	# 09-11 TYPE A	# 09-10 TYPE A	# 09-09 TYPE A	# 09-08 TYPE A	# 09-07 TYPE A	# 09-06 TYPE A	# 09-05 TYPE C	# 09-04 TYPE C	# 09-03 TYPE B	# 09-02 TYPE B	# 09-01 TYPE C	# 09-16 TYPE C	# 09-15 TYPE B	# 09-14 TYPE B					
8TH FLOOR	# 08-13 TYPE C	# 08-12 TYPE C	# 08-11 TYPE A	# 08-10 TYPE A	# 08-09 TYPE A	# 08-08 TYPE A	# 08-07 TYPE A	# 08-06 TYPE A	# 08-05 TYPE C	# 08-04 TYPE C	# 08-03 TYPE B	# 08-02 TYPE B	# 08-01 TYPE C	# 08-16 TYPE C	# 08-15 TYPE B	# 08-14 TYPE B					
7TH FLOOR	CARPARK					# 07-08 TYPE A	# 07-07 TYPE A	# 07-06 TYPE A	# 07-05 TYPE C	# 07-04 TYPE C	# 07-03 TYPE B	# 07-02 TYPE B	# 07-01 TYPE C	# 07-11 TYPE C	# 07-10 TYPE B	# 07-09 TYPE B					
6TH FLOOR	CARPARK					FACILITIES		FACILITIES	# 06-05 TYPE C	# 06-04 TYPE C	# 06-03 TYPE B	# 06-02 TYPE B	# 06-01 TYPE C	# 06-08 TYPE C	# 06-07 TYPE B	# 06-06 TYPE B					
5TH FLOOR	CARPARK					FACILITIES		FACILITIES	# 05-05 TYPE C	# 05-04 TYPE C	# 05-03 TYPE B	# 05-02 TYPE B	# 05-01 TYPE C	# 05-08 TYPE C	# 05-07 TYPE B	# 05-06 TYPE B					
4TH FLOOR	CARPARK					SHOP LOT		CARPARK	# 04-05 TYPE C	# 04-04 TYPE C	# 04-03 TYPE B	# 04-02 TYPE B	# 04-01 TYPE C	# 04-08 TYPE C	# 04-07 TYPE B	# 04-06 TYPE B					
3RD FLOOR	CARPARK					SHOP LOT		CARPARK	# 03-05 TYPE C	# 03-04 TYPE C	# 03-03 TYPE B	# 03-02 TYPE B	# 03-01 TYPE C	# 03-08 TYPE C	# 03-07 TYPE B	# 03-06 TYPE B					
2ND FLOOR	CARPARK					SHOP LOT		CARPARK	# 02-05 TYPE C	# 02-04 TYPE C	# 02-03 TYPE B	# 02-02 TYPE B	# 02-01 TYPE C	# 02-08 TYPE C	# 02-07 TYPE B	# 02-06 TYPE B					
1ST FLOOR	CARPARK					SHOP LOT		CARPARK	# 01-04 TYPE C	# 01-03 TYPE C	# 01-02 TYPE B	SERVICES	# 01-01 TYPE C	# 01-07 TYPE C	# 01-06 TYPE B	# 01-05 TYPE B					
GROUND FLOOR	CARPARK					SHOP LOT		CARPARK	# G-03 TYPE C	# G-02 TYPE B	SERVICES	# G-01 TYPE C	# G-06 TYPE C	# G-05 TYPE B	# G-04 TYPE B						

QUICK LINKS	
TOWER A	
Storey Chart	
Ground Floor	
1 <sup>st</sup> Floor	
2 <sup>nd</sup> Floor	
3 <sup>rd</sup> Floor	
4 <sup>th</sup> Floor	
5 <sup>th</sup> Floor	
6 <sup>th</sup> Floor	
Typical Floor	
Break Tank Floor	
TOWER B	
Storey Chart	
Ground Floor	
1 <sup>st</sup> Floor	
2 <sup>nd</sup> Floor	
3 <sup>rd</sup> Floor	
4 <sup>th</sup> Floor	
5 <sup>th</sup> Floor	
6 <sup>th</sup> Floor	
7 <sup>th</sup> Floor	
Typical Floor	
Break Tank Floor	
TOWER C	
Storey Chart	
Ground Floor	
1 <sup>st</sup> Floor	
2 <sup>nd</sup> Floor	
3 <sup>rd</sup> Floor	
4 <sup>th</sup> Floor	
5 <sup>th</sup> Floor	
6 <sup>th</sup> Floor	
7 <sup>th</sup> Floor	
Typical Floor	
Break Tank Floor	
UNIT PLAN	
4TH SCHEDULE	

**NOTE:**

- Not to scale.
- The unit number is an indicative number only and does not represent the house numbering in the actual address.
- Unit numbers, plans, layouts and other information contained herein are intended to give a general indication of the proposed design only and are subject to change and/or amendments as may be required or as directed by the relevant authorities/engineer(s)/architect.

# TOWER B LEVEL GROUND FLOOR



**QUICK LINKS**

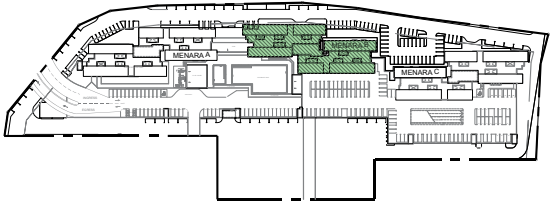
- TOWER A**
- Storey Chart
- Ground Floor
- 1<sup>st</sup> Floor
- 2<sup>nd</sup> Floor
- 3<sup>rd</sup> Floor
- 4<sup>th</sup> Floor
- 5<sup>th</sup> Floor
- 6<sup>th</sup> Floor
- Typical Floor
- Break Tank Floor
- TOWER B**
- Storey Chart
- Ground Floor
- 1<sup>st</sup> Floor
- 2<sup>nd</sup> Floor
- 3<sup>rd</sup> Floor
- 4<sup>th</sup> Floor
- 5<sup>th</sup> Floor
- 6<sup>th</sup> Floor
- 7<sup>th</sup> Floor
- Typical Floor
- Break Tank Floor
- TOWER C**
- Storey Chart
- Ground Floor
- 1<sup>st</sup> Floor
- 2<sup>nd</sup> Floor
- 3<sup>rd</sup> Floor
- 4<sup>th</sup> Floor
- 5<sup>th</sup> Floor
- 6<sup>th</sup> Floor
- 7<sup>th</sup> Floor
- Typical Floor
- Break Tank Floor
- UNIT PLAN**
- 4TH SCHEDULE**

**TOWER B**  
**LEVEL GROUND FLOOR**

**NOTE:**

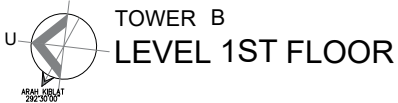
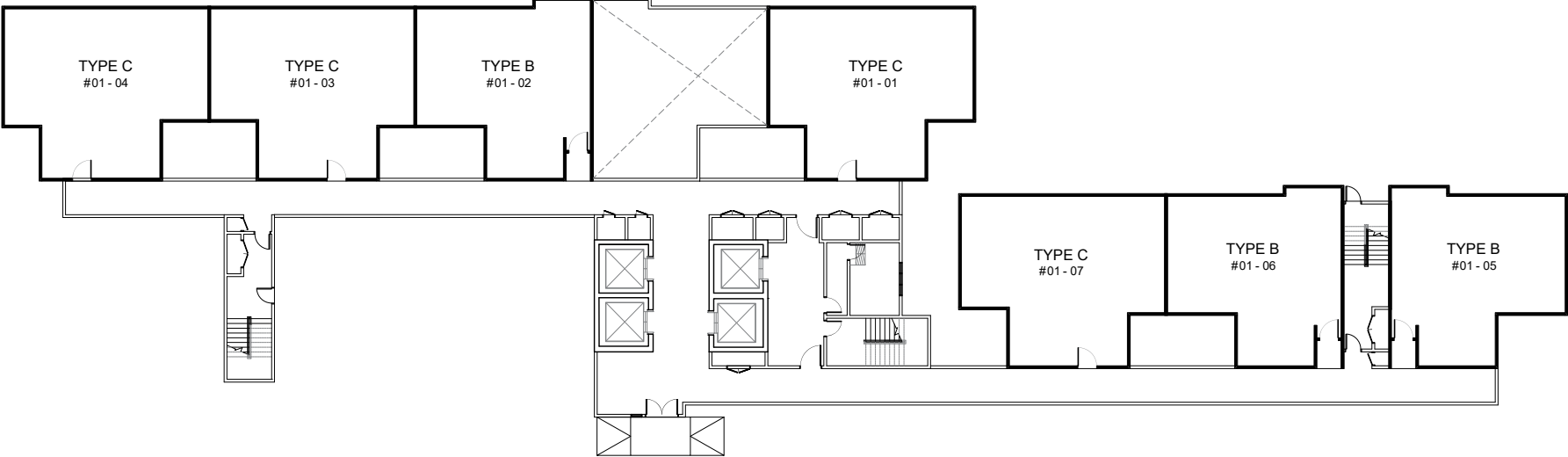
1. Not to scale.
2. The unit number is an indicative number only and does not represent the house numbering in the actual address.
3. Unit numbers, plans, layouts and other information contained herein are intended to give a general indication of the proposed design only and are subject to change and/or amendments as may be required or as directed by the relevant authorities/engineer(s)/architect.

# TOWER B LEVEL 1<sup>ST</sup> FLOOR



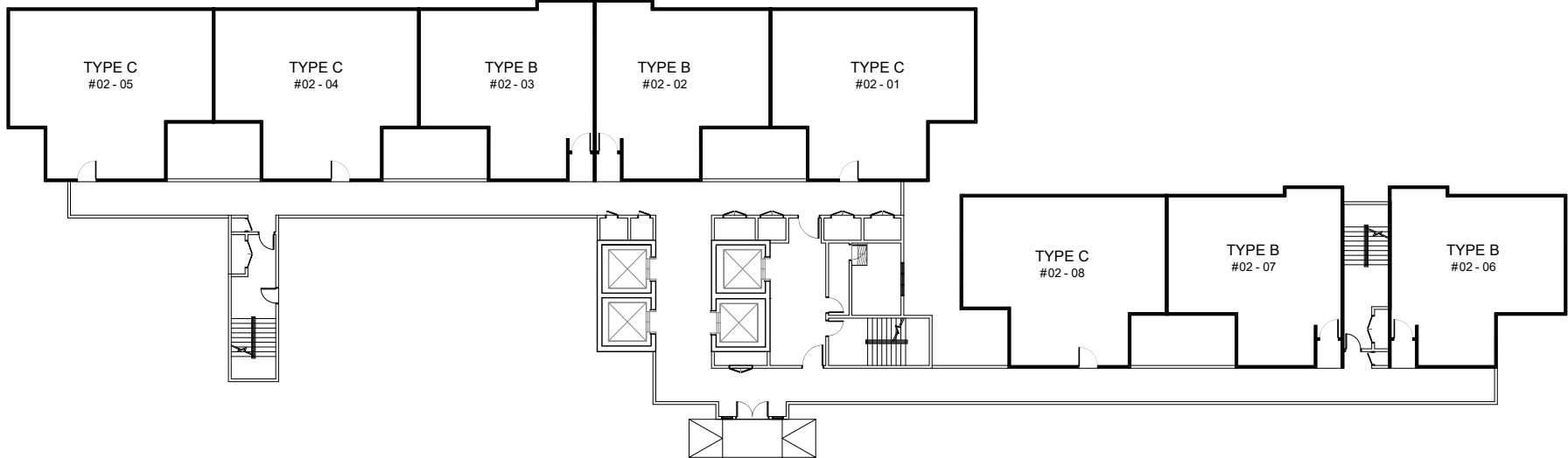
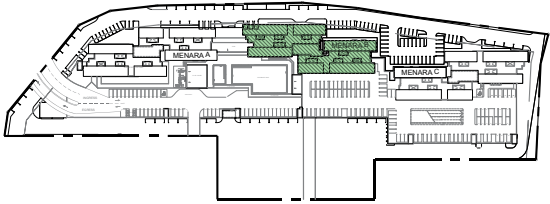
**QUICK LINKS**

- TOWER A**
- Storey Chart
- Ground Floor
- 1<sup>st</sup> Floor
- 2<sup>nd</sup> Floor
- 3<sup>rd</sup> Floor
- 4<sup>th</sup> Floor
- 5<sup>th</sup> Floor
- 6<sup>th</sup> Floor
- Typical Floor
- Break Tank Floor
- TOWER B**
- Storey Chart
- Ground Floor
- 1<sup>st</sup> Floor
- 2<sup>nd</sup> Floor
- 3<sup>rd</sup> Floor
- 4<sup>th</sup> Floor
- 5<sup>th</sup> Floor
- 6<sup>th</sup> Floor
- 7<sup>th</sup> Floor
- Typical Floor
- Break Tank Floor
- TOWER C**
- Storey Chart
- Ground Floor
- 1<sup>st</sup> Floor
- 2<sup>nd</sup> Floor
- 3<sup>rd</sup> Floor
- 4<sup>th</sup> Floor
- 5<sup>th</sup> Floor
- 6<sup>th</sup> Floor
- 7<sup>th</sup> Floor
- Typical Floor
- Break Tank Floor
- UNIT PLAN**
- 4TH SCHEDULE**




- NOTE:**
1. Not to scale.
  2. The unit number is an indicative number only and does not represent the house numbering in the actual address.
  3. Unit numbers, plans, layouts and other information contained herein are intended to give a general indication of the proposed design only and are subject to change and/or amendments as may be required or as directed by the relevant authorities/engineer(s)/architect.

# TOWER B LEVEL 2<sup>ND</sup> FLOOR



**QUICK LINKS**

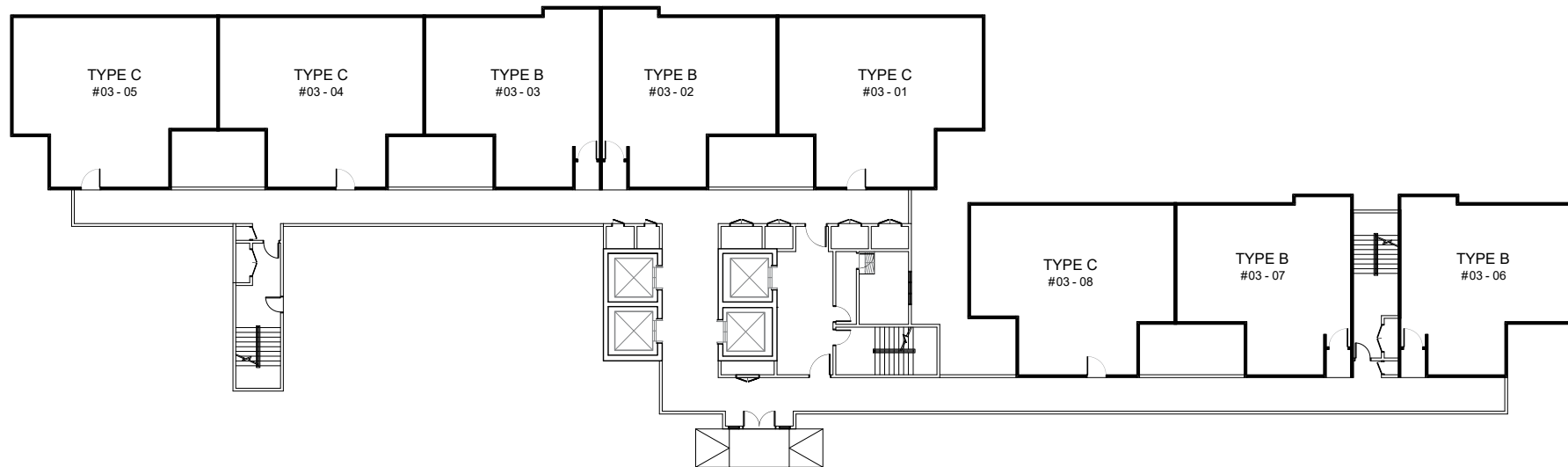
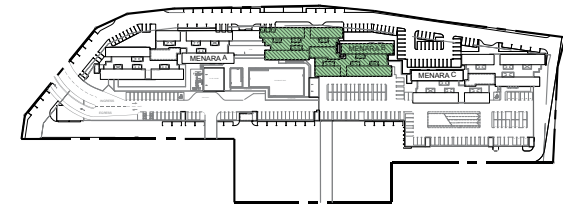
- TOWER A**
- Storey Chart
- Ground Floor
- 1<sup>st</sup> Floor
- 2<sup>nd</sup> Floor
- 3<sup>rd</sup> Floor
- 4<sup>th</sup> Floor
- 5<sup>th</sup> Floor
- 6<sup>th</sup> Floor
- Typical Floor
- Break Tank Floor
- TOWER B**
- Storey Chart
- Ground Floor
- 1<sup>st</sup> Floor
- 2<sup>nd</sup> Floor
- 3<sup>rd</sup> Floor
- 4<sup>th</sup> Floor
- 5<sup>th</sup> Floor
- 6<sup>th</sup> Floor
- 7<sup>th</sup> Floor
- Typical Floor
- Break Tank Floor
- TOWER C**
- Storey Chart
- Ground Floor
- 1<sup>st</sup> Floor
- 2<sup>nd</sup> Floor
- 3<sup>rd</sup> Floor
- 4<sup>th</sup> Floor
- 5<sup>th</sup> Floor
- 6<sup>th</sup> Floor
- 7<sup>th</sup> Floor
- Typical Floor
- Break Tank Floor
- UNIT PLAN**
- 4TH SCHEDULE**

 TOWER B  
LEVEL 2<sup>ND</sup> FLOOR

**NOTE:**

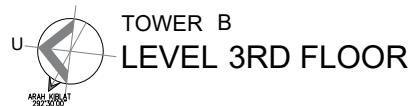
1. Not to scale.
2. The unit number is an indicative number only and does not represent the house numbering in the actual address.
3. Unit numbers, plans, layouts and other information contained herein are intended to give a general indication of the proposed design only and are subject to change and/or amendments as may be required or as directed by the relevant authorities/engineer(s)/architect.

# TOWER B LEVEL 3<sup>RD</sup> FLOOR



**QUICK LINKS**

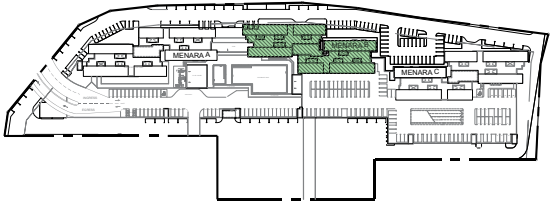
- TOWER A**
- Storey Chart
- Ground Floor
- 1<sup>st</sup> Floor
- 2<sup>nd</sup> Floor
- 3<sup>rd</sup> Floor
- 4<sup>th</sup> Floor
- 5<sup>th</sup> Floor
- 6<sup>th</sup> Floor
- Typical Floor
- Break Tank Floor
- TOWER B**
- Storey Chart
- Ground Floor
- 1<sup>st</sup> Floor
- 2<sup>nd</sup> Floor
- 3<sup>rd</sup> Floor
- 4<sup>th</sup> Floor
- 5<sup>th</sup> Floor
- 6<sup>th</sup> Floor
- 7<sup>th</sup> Floor
- Typical Floor
- Break Tank Floor
- TOWER C**
- Storey Chart
- Ground Floor
- 1<sup>st</sup> Floor
- 2<sup>nd</sup> Floor
- 3<sup>rd</sup> Floor
- 4<sup>th</sup> Floor
- 5<sup>th</sup> Floor
- 6<sup>th</sup> Floor
- 7<sup>th</sup> Floor
- Typical Floor
- Break Tank Floor
- UNIT PLAN**
- 4TH SCHEDULE**



**NOTE:**

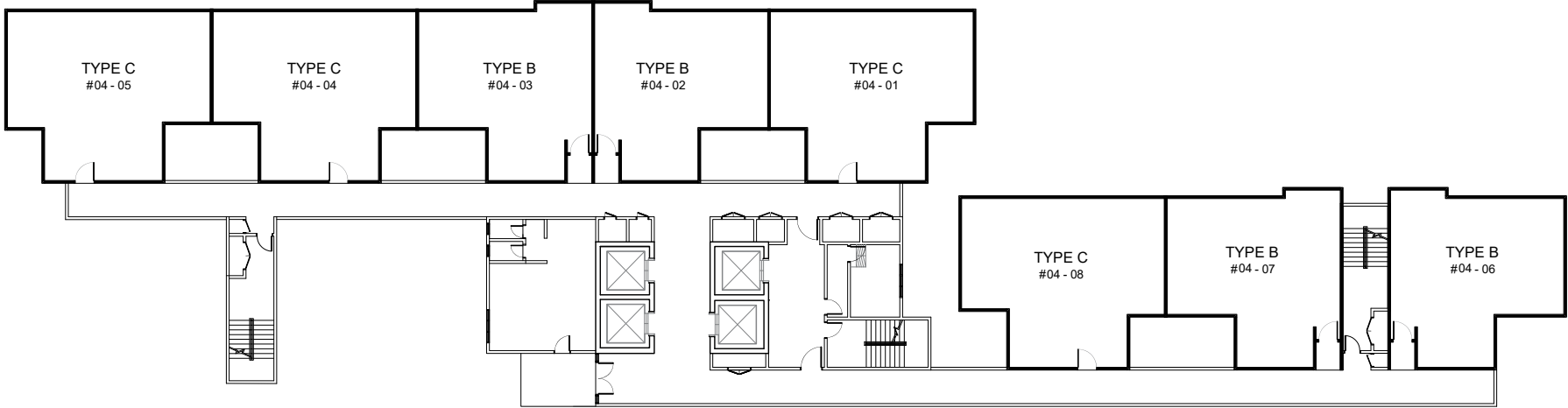
1. Not to scale.
2. The unit number is an indicative number only and does not represent the house numbering in the actual address.
3. Unit numbers, plans, layouts and other information contained herein are intended to give a general indication of the proposed design only and are subject to change and/or amendments as may be required or as directed by the relevant authorities/engineer(s)/architect.

# TOWER B LEVEL 4<sup>TH</sup> FLOOR



**QUICK LINKS**

- TOWER A**
- Storey Chart
- Ground Floor
- 1<sup>st</sup> Floor
- 2<sup>nd</sup> Floor
- 3<sup>rd</sup> Floor
- 4<sup>th</sup> Floor
- 5<sup>th</sup> Floor
- 6<sup>th</sup> Floor
- Typical Floor
- Break Tank Floor
- TOWER B**
- Storey Chart
- Ground Floor
- 1<sup>st</sup> Floor
- 2<sup>nd</sup> Floor
- 3<sup>rd</sup> Floor
- 4<sup>th</sup> Floor
- 5<sup>th</sup> Floor
- 6<sup>th</sup> Floor
- 7<sup>th</sup> Floor
- Typical Floor
- Break Tank Floor
- TOWER C**
- Storey Chart
- Ground Floor
- 1<sup>st</sup> Floor
- 2<sup>nd</sup> Floor
- 3<sup>rd</sup> Floor
- 4<sup>th</sup> Floor
- 5<sup>th</sup> Floor
- 6<sup>th</sup> Floor
- 7<sup>th</sup> Floor
- Typical Floor
- Break Tank Floor
- UNIT PLAN**
- 4TH SCHEDULE**

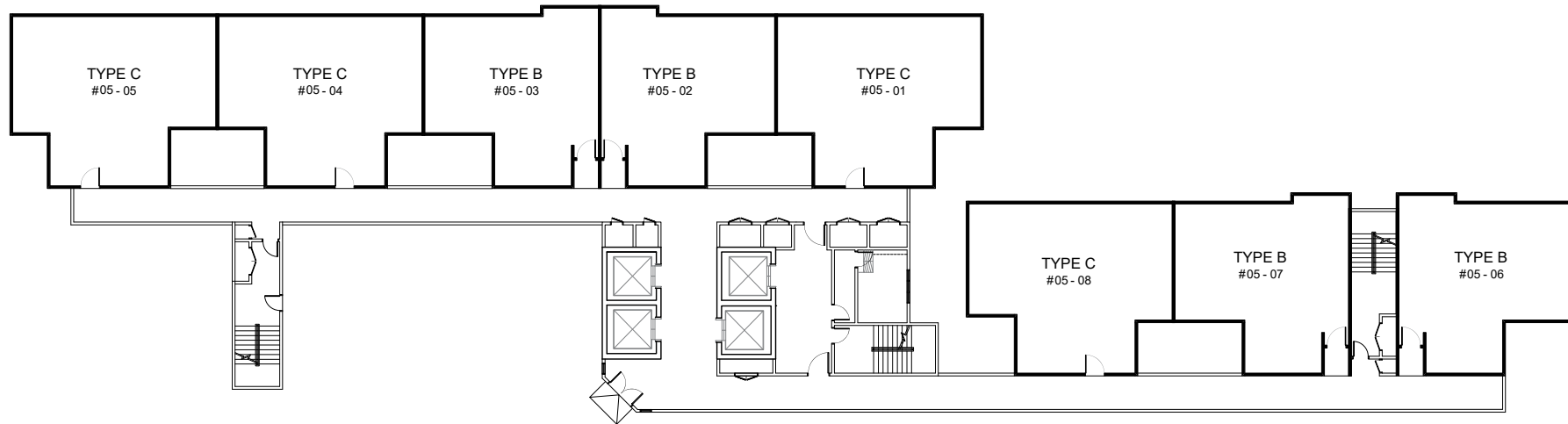
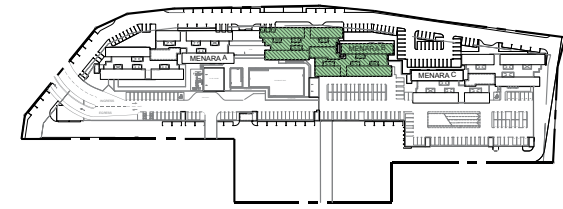


**TOWER B**  
**LEVEL 4<sup>TH</sup> FLOOR**

**NOTE:**


- Not to scale.
- The unit number is an indicative number only and does not represent the house numbering in the actual address.
- Unit numbers, plans, layouts and other information contained herein are intended to give a general indication of the proposed design only and are subject to change and/or amendments as may be required or as directed by the relevant authorities/engineer(s)/architect.

# TOWER B LEVEL 5<sup>TH</sup> FLOOR



**QUICK LINKS**

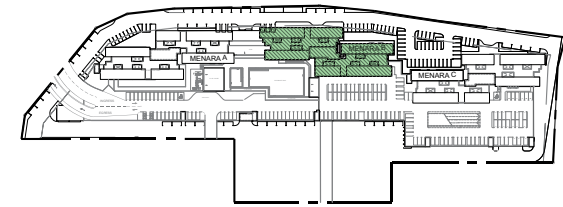
- TOWER A**
- Storey Chart
- Ground Floor
- 1<sup>st</sup> Floor
- 2<sup>nd</sup> Floor
- 3<sup>rd</sup> Floor
- 4<sup>th</sup> Floor
- 5<sup>th</sup> Floor
- 6<sup>th</sup> Floor
- Typical Floor
- Break Tank Floor
- TOWER B**
- Storey Chart
- Ground Floor
- 1<sup>st</sup> Floor
- 2<sup>nd</sup> Floor
- 3<sup>rd</sup> Floor
- 4<sup>th</sup> Floor
- 5<sup>th</sup> Floor
- 6<sup>th</sup> Floor
- 7<sup>th</sup> Floor
- Typical Floor
- Break Tank Floor
- TOWER C**
- Storey Chart
- Ground Floor
- 1<sup>st</sup> Floor
- 2<sup>nd</sup> Floor
- 3<sup>rd</sup> Floor
- 4<sup>th</sup> Floor
- 5<sup>th</sup> Floor
- 6<sup>th</sup> Floor
- 7<sup>th</sup> Floor
- Typical Floor
- Break Tank Floor
- UNIT PLAN**
- 4TH SCHEDULE**

 TOWER B  
LEVEL 5<sup>TH</sup> FLOOR

**NOTE:**

1. Not to scale.
2. The unit number is an indicative number only and does not represent the house numbering in the actual address.
3. Unit numbers, plans, layouts and other information contained herein are intended to give a general indication of the proposed design only and are subject to change and/or amendments as may be required or as directed by the relevant authorities/engineer(s)/architect.

# TOWER B LEVEL 6<sup>TH</sup> FLOOR



**QUICK LINKS**

**TOWER A**

- [Storey Chart](#)
- [Ground Floor](#)
- [1<sup>st</sup> Floor](#)
- [2<sup>nd</sup> Floor](#)
- [3<sup>rd</sup> Floor](#)
- [4<sup>th</sup> Floor](#)
- [5<sup>th</sup> Floor](#)
- [6<sup>th</sup> Floor](#)
- [Typical Floor](#)
- [Break Tank Floor](#)

**TOWER B**

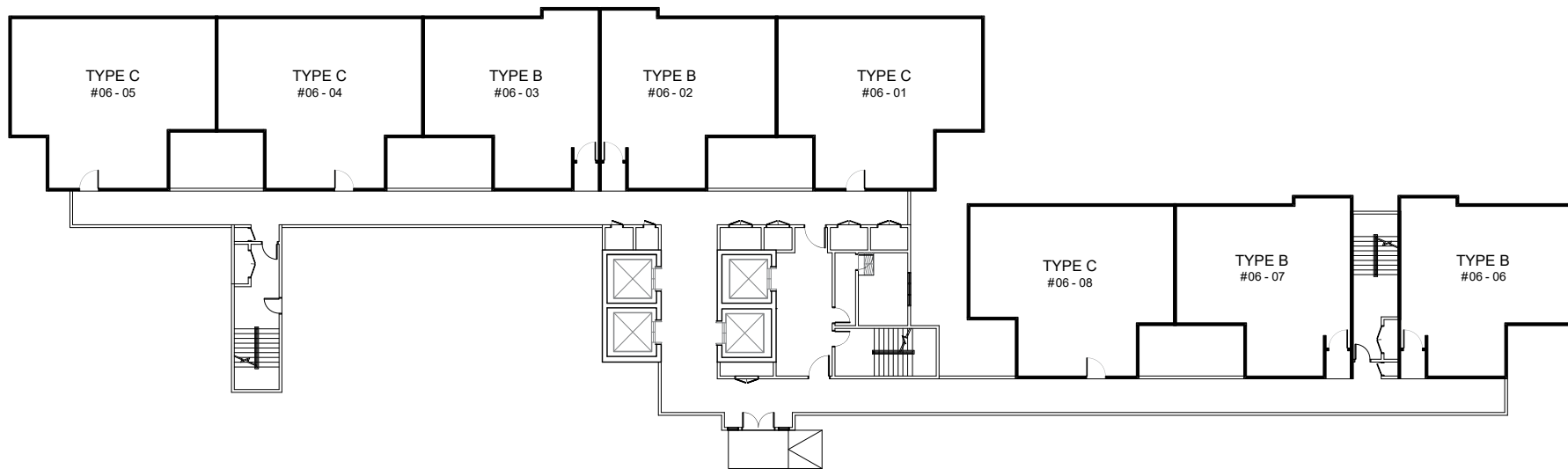
- [Storey Chart](#)
- [Ground Floor](#)
- [1<sup>st</sup> Floor](#)
- [2<sup>nd</sup> Floor](#)
- [3<sup>rd</sup> Floor](#)
- [4<sup>th</sup> Floor](#)
- [5<sup>th</sup> Floor](#)
- [6<sup>th</sup> Floor](#)
- [7<sup>th</sup> Floor](#)
- [Typical Floor](#)
- [Break Tank Floor](#)

**TOWER C**

- [Storey Chart](#)
- [Ground Floor](#)
- [1<sup>st</sup> Floor](#)
- [2<sup>nd</sup> Floor](#)
- [3<sup>rd</sup> Floor](#)
- [4<sup>th</sup> Floor](#)
- [5<sup>th</sup> Floor](#)
- [6<sup>th</sup> Floor](#)
- [7<sup>th</sup> Floor](#)
- [Typical Floor](#)
- [Break Tank Floor](#)

**UNIT PLAN**

**4TH SCHEDULE**

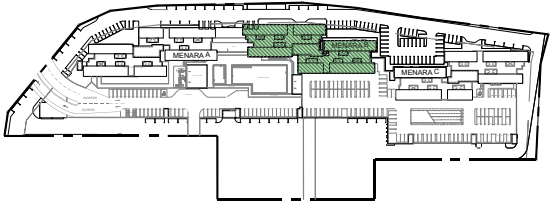


**TOWER B  
LEVEL 6TH FLOOR**

**NOTE:**

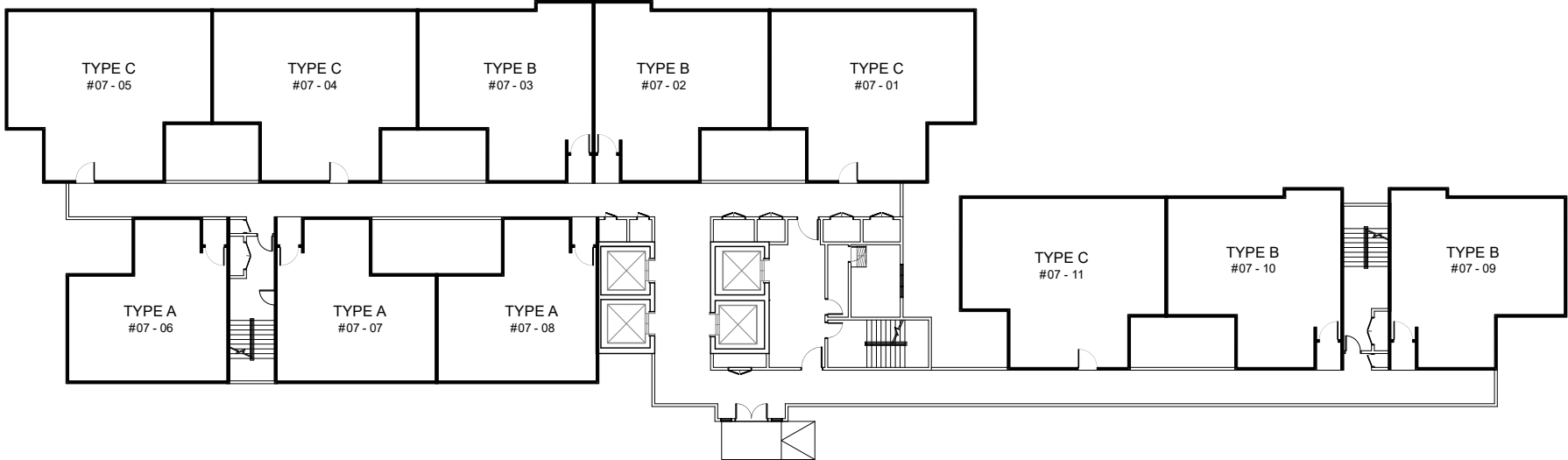
1. Not to scale.
2. The unit number is an indicative number only and does not represent the house numbering in the actual address.
3. Unit numbers, plans, layouts and other information contained herein are intended to give a general indication of the proposed design only and are subject to change and/or amendments as may be required or as directed by the relevant authorities/engineer(s)/architect.

# TOWER B LEVEL 7<sup>TH</sup> FLOOR



**QUICK LINKS**

- TOWER A**
- Storey Chart
- Ground Floor
- 1<sup>st</sup> Floor
- 2<sup>nd</sup> Floor
- 3<sup>rd</sup> Floor
- 4<sup>th</sup> Floor
- 5<sup>th</sup> Floor
- 6<sup>th</sup> Floor
- Typical Floor
- Break Tank Floor
- TOWER B**
- Storey Chart
- Ground Floor
- 1<sup>st</sup> Floor
- 2<sup>nd</sup> Floor
- 3<sup>rd</sup> Floor
- 4<sup>th</sup> Floor
- 5<sup>th</sup> Floor
- 6<sup>th</sup> Floor
- 7<sup>th</sup> Floor
- Typical Floor
- Break Tank Floor
- TOWER C**
- Storey Chart
- Ground Floor
- 1<sup>st</sup> Floor
- 2<sup>nd</sup> Floor
- 3<sup>rd</sup> Floor
- 4<sup>th</sup> Floor
- 5<sup>th</sup> Floor
- 6<sup>th</sup> Floor
- 7<sup>th</sup> Floor
- Typical Floor
- Break Tank Floor
- UNIT PLAN**
- 4TH SCHEDULE**

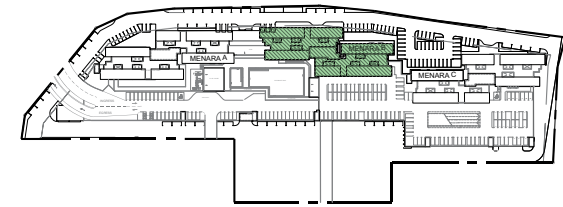


**TOWER B  
LEVEL 7TH FLOOR**

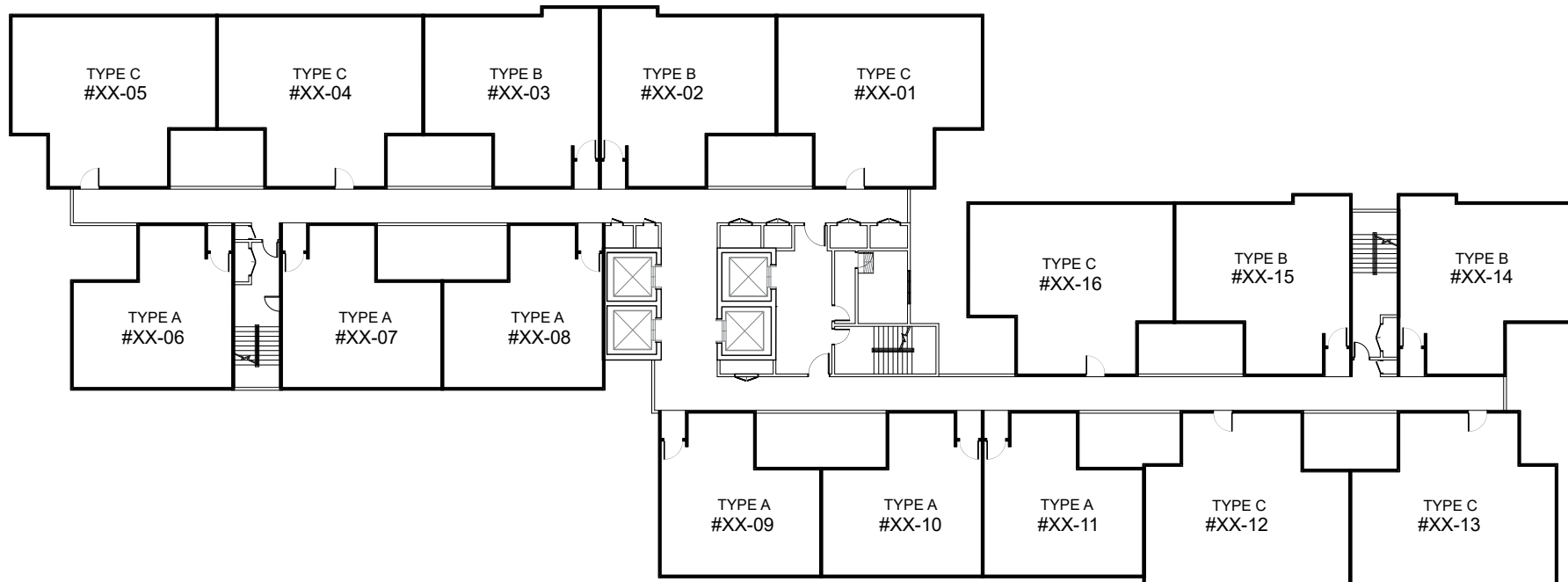
- NOTE:**
1. Not to scale.
  2. The unit number is an indicative number only and does not represent the house numbering in the actual address.
  3. Unit numbers, plans, layouts and other information contained herein are intended to give a general indication of the proposed design only and are subject to change and/or amendments as may be required or as directed by the relevant authorities/engineer(s)/architect.

# TOWER B TYPICAL FLOOR PLAN

## LEVEL 8<sup>TH</sup> - 17<sup>TH</sup> & 19<sup>TH</sup> - 23<sup>RD</sup> FLOOR



\*XX=Level Number



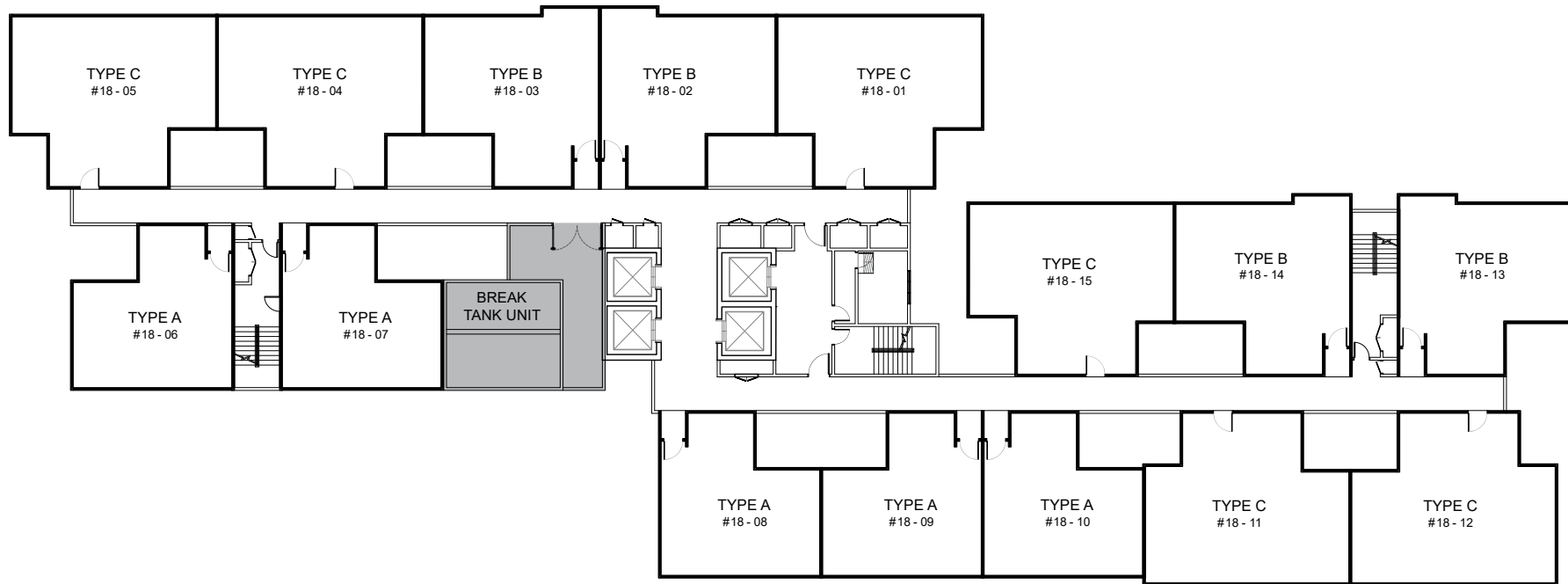
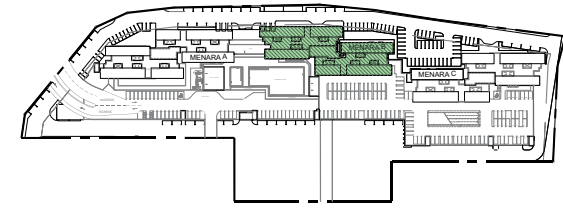
TOWER B  
LEVEL 8<sup>TH</sup> - 17<sup>TH</sup> & 19<sup>TH</sup> - 23<sup>RD</sup>


**NOTE:**

1. Not to scale.
2. The unit number is an indicative number only and does not represent the house numbering in the actual address.
3. Unit numbers, plans, layouts and other information contained herein are intended to give a general indication of the proposed design only and are subject to change and/or amendments as may be required or as directed by the relevant authorities/engineer(s)/architect.

<b>QUICK LINKS</b>
<b>TOWER A</b>
Storey Chart
Ground Floor
1 <sup>st</sup> Floor
2 <sup>nd</sup> Floor
3 <sup>rd</sup> Floor
4 <sup>th</sup> Floor
5 <sup>th</sup> Floor
6 <sup>th</sup> Floor
Typical Floor
Break Tank Floor
<b>TOWER B</b>
Storey Chart
Ground Floor
1 <sup>st</sup> Floor
2 <sup>nd</sup> Floor
3 <sup>rd</sup> Floor
4 <sup>th</sup> Floor
5 <sup>th</sup> Floor
6 <sup>th</sup> Floor
7 <sup>th</sup> Floor
Typical Floor
Break Tank Floor
<b>TOWER C</b>
Storey Chart
Ground Floor
1 <sup>st</sup> Floor
2 <sup>nd</sup> Floor
3 <sup>rd</sup> Floor
4 <sup>th</sup> Floor
5 <sup>th</sup> Floor
6 <sup>th</sup> Floor
7 <sup>th</sup> Floor
Typical Floor
Break Tank Floor
<b>UNIT PLAN</b>
<b>4TH SCHEDULE</b>

# TOWER B BREAK TANK LEVEL LEVEL 18<sup>TH</sup> FLOOR



 TOWER B  
LEVEL 18TH FLOOR

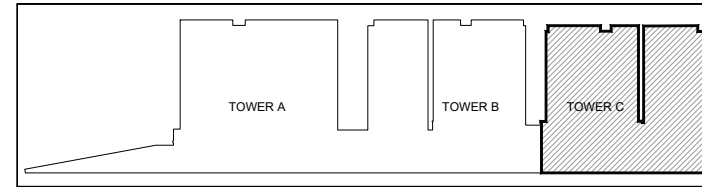
**NOTE:**

1. Not to scale.
2. The unit number is an indicative number only and does not represent the house numbering in the actual address.
3. Unit numbers, plans, layouts and other information contained herein are intended to give a general indication of the proposed design only and are subject to change and/or amendments as may be required or as directed by the relevant authorities/engineer(s)/architect.

**QUICK LINKS**

- TOWER A**
  - Storey Chart
  - Ground Floor
  - 1<sup>st</sup> Floor
  - 2<sup>nd</sup> Floor
  - 3<sup>rd</sup> Floor
  - 4<sup>th</sup> Floor
  - 5<sup>th</sup> Floor
  - 6<sup>th</sup> Floor
  - Typical Floor
  - Break Tank Floor
- TOWER B**
  - Storey Chart
  - Ground Floor
  - 1<sup>st</sup> Floor
  - 2<sup>nd</sup> Floor
  - 3<sup>rd</sup> Floor
  - 4<sup>th</sup> Floor
  - 5<sup>th</sup> Floor
  - 6<sup>th</sup> Floor
  - 7<sup>th</sup> Floor
  - Typical Floor
  - Break Tank Floor
- TOWER C**
  - Storey Chart
  - Ground Floor
  - 1<sup>st</sup> Floor
  - 2<sup>nd</sup> Floor
  - 3<sup>rd</sup> Floor
  - 4<sup>th</sup> Floor
  - 5<sup>th</sup> Floor
  - 6<sup>th</sup> Floor
  - 7<sup>th</sup> Floor
  - Typical Floor
  - Break Tank Floor
- UNIT PLAN**
- 4TH SCHEDULE**

# TOWER C STOREY CHART



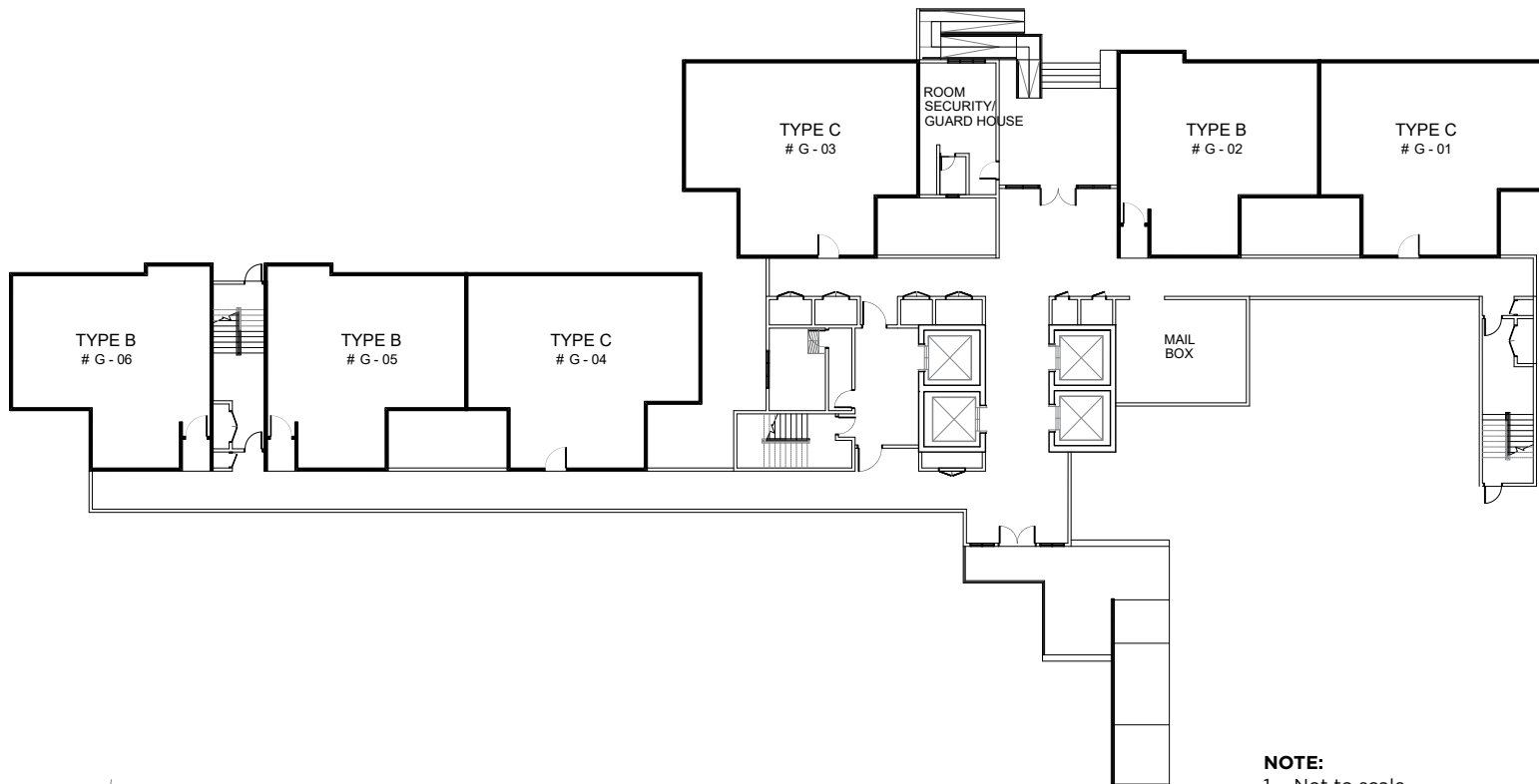
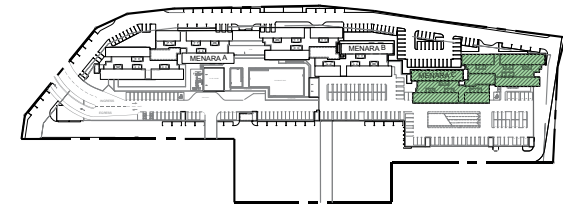
<b>QUICK LINKS</b>
<b>TOWER A</b>
Storey Chart
Ground Floor
1 <sup>st</sup> Floor
2 <sup>nd</sup> Floor
3 <sup>rd</sup> Floor
4 <sup>th</sup> Floor
5 <sup>th</sup> Floor
6 <sup>th</sup> Floor
Typical Floor
Break Tank Floor
<b>TOWER B</b>
Storey Chart
Ground Floor
1 <sup>st</sup> Floor
2 <sup>nd</sup> Floor
3 <sup>rd</sup> Floor
4 <sup>th</sup> Floor
5 <sup>th</sup> Floor
6 <sup>th</sup> Floor
7 <sup>th</sup> Floor
Typical Floor
Break Tank Floor
<b>TOWER C</b>
Storey Chart
Ground Floor
1 <sup>st</sup> Floor
2 <sup>nd</sup> Floor
3 <sup>rd</sup> Floor
4 <sup>th</sup> Floor
5 <sup>th</sup> Floor
6 <sup>th</sup> Floor
7 <sup>th</sup> Floor
Typical Floor
Break Tank Floor
<b>UNIT PLAN</b>
<b>4TH SCHEDULE</b>

ROOF LEVEL	MENARA C															
22TH FLOOR	# 22-03 TYPE A	# 22-02 TYPE A	# 22-01 TYPE A	# 22-16 TYPE A	# 22-15 TYPE A	# 22-14 TYPE A	# 22-13 TYPE C	# 22-12 TYPE C	# 22-11 TYPE B	# 22-10 TYPE B	# 22-09 TYPE C	# 22-08 TYPE C	# 22-07 TYPE B	# 22-06 TYPE B	# 22-05 TYPE C	# 22-04 TYPE C
21TH FLOOR	# 21-03 TYPE A	# 21-02 TYPE A	# 21-01 TYPE A	# 21-16 TYPE A	# 21-15 TYPE A	# 21-14 TYPE A	# 21-13 TYPE C	# 21-12 TYPE C	# 21-11 TYPE B	# 21-10 TYPE B	# 21-09 TYPE C	# 21-08 TYPE C	# 21-07 TYPE B	# 21-06 TYPE B	# 21-05 TYPE C	# 21-04 TYPE C
20TH FLOOR	# 20-03 TYPE A	# 20-02 TYPE A	# 20-01 TYPE A	# 20-16 TYPE A	# 20-15 TYPE A	# 20-14 TYPE A	# 20-13 TYPE C	# 20-12 TYPE C	# 20-11 TYPE B	# 20-10 TYPE B	# 20-09 TYPE C	# 20-08 TYPE C	# 20-07 TYPE B	# 20-06 TYPE B	# 20-05 TYPE C	# 20-04 TYPE C
19TH FLOOR	# 19-03 TYPE A	# 19-02 TYPE A	# 19-01 TYPE A	# 19-16 TYPE A	# 19-15 TYPE A	# 19-14 TYPE A	# 19-13 TYPE C	# 19-12 TYPE C	# 19-11 TYPE B	# 19-10 TYPE B	# 19-09 TYPE C	# 19-08 TYPE C	# 19-07 TYPE B	# 19-06 TYPE B	# 19-05 TYPE C	# 19-04 TYPE C
18TH FLOOR (break tank)	# 18-02 TYPE A	# 18-01 TYPE A	PUMP ROOM	# 18-15 TYPE A	# 18-14 TYPE A	# 18-13 TYPE A	# 18-12 TYPE C	# 18-11 TYPE C	# 18-10 TYPE B	# 18-09 TYPE B	# 18-08 TYPE C	# 18-07 TYPE C	# 18-06 TYPE B	# 18-05 TYPE B	# 18-04 TYPE C	# 18-03 TYPE C
17TH FLOOR	# 17-03 TYPE A	# 17-02 TYPE A	# 17-01 TYPE A	# 17-16 TYPE A	# 17-15 TYPE A	# 17-14 TYPE A	# 17-13 TYPE C	# 17-12 TYPE C	# 17-11 TYPE B	# 17-10 TYPE B	# 17-09 TYPE C	# 17-08 TYPE C	# 17-07 TYPE B	# 17-06 TYPE B	# 17-05 TYPE C	# 17-04 TYPE C
16TH FLOOR	# 16-03 TYPE A	# 16-02 TYPE A	# 16-01 TYPE A	# 16-16 TYPE A	# 16-15 TYPE A	# 16-14 TYPE A	# 16-13 TYPE C	# 16-12 TYPE C	# 16-11 TYPE B	# 16-10 TYPE B	# 16-09 TYPE C	# 16-08 TYPE C	# 16-07 TYPE B	# 16-06 TYPE B	# 16-05 TYPE C	# 16-04 TYPE C
15TH FLOOR	# 15-03 TYPE A	# 15-02 TYPE A	# 15-01 TYPE A	# 15-16 TYPE A	# 15-15 TYPE A	# 15-14 TYPE A	# 15-13 TYPE C	# 15-12 TYPE C	# 15-11 TYPE B	# 15-10 TYPE B	# 15-09 TYPE C	# 15-08 TYPE C	# 15-07 TYPE B	# 15-06 TYPE B	# 15-05 TYPE C	# 15-04 TYPE C
14TH FLOOR	# 14-03 TYPE A	# 14-02 TYPE A	# 14-01 TYPE A	# 14-16 TYPE A	# 14-15 TYPE A	# 14-14 TYPE A	# 14-13 TYPE C	# 14-12 TYPE C	# 14-11 TYPE B	# 14-10 TYPE B	# 14-09 TYPE C	# 14-08 TYPE C	# 14-07 TYPE B	# 14-06 TYPE B	# 14-05 TYPE C	# 14-04 TYPE C
13TH FLOOR	# 13-03 TYPE A	# 13-02 TYPE A	# 13-01 TYPE A	# 13-16 TYPE A	# 13-15 TYPE A	# 13-14 TYPE A	# 13-13 TYPE C	# 13-12 TYPE C	# 13-11 TYPE B	# 13-10 TYPE B	# 13-09 TYPE C	# 13-08 TYPE C	# 13-07 TYPE B	# 13-06 TYPE B	# 13-05 TYPE C	# 13-04 TYPE C
12TH FLOOR	# 12-03 TYPE A	# 12-02 TYPE A	# 12-01 TYPE A	# 12-16 TYPE A	# 12-15 TYPE A	# 12-14 TYPE A	# 12-13 TYPE C	# 12-12 TYPE C	# 12-11 TYPE B	# 12-10 TYPE B	# 12-09 TYPE C	# 12-08 TYPE C	# 12-07 TYPE B	# 12-06 TYPE B	# 12-05 TYPE C	# 12-04 TYPE C
11TH FLOOR	# 11-03 TYPE A	# 11-02 TYPE A	# 11-01 TYPE A	# 11-16 TYPE A	# 11-15 TYPE A	# 11-14 TYPE A	# 11-13 TYPE C	# 11-12 TYPE C	# 11-11 TYPE B	# 11-10 TYPE B	# 11-09 TYPE C	# 11-08 TYPE C	# 11-07 TYPE B	# 11-06 TYPE B	# 11-05 TYPE C	# 11-04 TYPE C
10TH FLOOR	# 10-03 TYPE A	# 10-02 TYPE A	# 10-01 TYPE A	# 10-16 TYPE A	# 10-15 TYPE A	# 10-14 TYPE A	# 10-13 TYPE C	# 10-12 TYPE C	# 10-11 TYPE B	# 10-10 TYPE B	# 10-09 TYPE C	# 10-08 TYPE C	# 10-07 TYPE B	# 10-06 TYPE B	# 10-05 TYPE C	# 10-04 TYPE C
9TH FLOOR	# 09-03 TYPE A	# 09-02 TYPE A	# 09-01 TYPE A	# 09-16 TYPE A	# 09-15 TYPE A	# 09-14 TYPE A	# 09-13 TYPE C	# 09-12 TYPE C	# 09-11 TYPE B	# 09-10 TYPE B	# 09-09 TYPE C	# 09-08 TYPE C	# 09-07 TYPE B	# 09-06 TYPE B	# 09-05 TYPE C	# 09-04 TYPE C
8TH FLOOR	# 08-03 TYPE A	# 08-02 TYPE A	# 08-01 TYPE A	# 08-16 TYPE A	# 08-15 TYPE A	# 08-14 TYPE A	# 08-13 TYPE C	# 08-12 TYPE C	# 08-11 TYPE B	# 08-10 TYPE B	# 08-09 TYPE C	# 08-08 TYPE C	# 08-07 TYPE B	# 08-06 TYPE B	# 08-05 TYPE C	# 08-04 TYPE C
7TH FLOOR	CARPARK	CARPARK		CARPARK					# 07-08 TYPE B	# 07-07 TYPE B	# 07-06 TYPE C	# 07-05 TYPE C	# 07-04 TYPE B	# 07-03 TYPE B	# 07-02 TYPE C	# 07-01 TYPE C
6TH FLOOR	CARPARK	CARPARK		CARPARK					# 06-08 TYPE B	# 06-07 TYPE B	# 06-06 TYPE C	# 06-05 TYPE C	# 06-04 TYPE B	# 06-03 TYPE B	# 06-02 TYPE C	# 06-01 TYPE C
5TH FLOOR	CARPARK	CARPARK		CARPARK					# 05-08 TYPE B	# 05-07 TYPE B	# 05-06 TYPE C	# 05-05 TYPE C	# 05-04 TYPE B	# 05-03 TYPE B	# 05-02 TYPE C	# 05-01 TYPE C
4TH FLOOR	CARPARK	CARPARK		CARPARK					# 04-08 TYPE B	# 04-07 TYPE B	# 04-06 TYPE C	# 04-05 TYPE C	# 04-04 TYPE B	# 04-03 TYPE B	# 04-02 TYPE C	# 04-01 TYPE C
3RD FLOOR	CARPARK	CARPARK		CARPARK					# 03-08 TYPE B	# 03-07 TYPE B	# 03-06 TYPE C	# 03-05 TYPE C	# 03-04 TYPE B	# 03-03 TYPE B	# 03-02 TYPE C	# 03-01 TYPE C
2ND FLOOR	CARPARK	CARPARK		CARPARK					# 02-08 TYPE B	# 02-07 TYPE B	# 02-06 TYPE C	# 02-05 TYPE C	# 02-04 TYPE B	# 02-03 TYPE B	# 02-02 TYPE C	# 02-01 TYPE C
1ST FLOOR	CARPARK	CARPARK		CARPARK					# 01-07 TYPE B	# 01-06 TYPE B	# 01-05 TYPE C	# 01-04 TYPE C	SERVICES	# 01-03 TYPE B	# 01-02 TYPE C	# 01-01 TYPE C
GROUND FLOOR	CARPARK	CARPARK		SERVICES			CARPARK	# G-06 TYPE B	# G-05 TYPE B	# G-04 TYPE C	# G-03 TYPE C	SERVICES	# G-02 TYPE B	# G-01 TYPE C	CARPARK	

**NOTE:**

- Not to scale.
- The unit number is an indicative number only and does not represent the house numbering in the actual address.
- Unit numbers, plans, layouts and other information contained herein are intended to give a general indication of the proposed design only and are subject to change and/or amendments as may be required or as directed by the relevant authorities/engineer(s)/architect.

# TOWER C LEVEL GROUND FLOOR



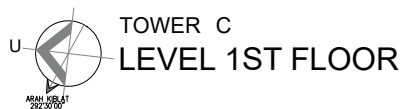
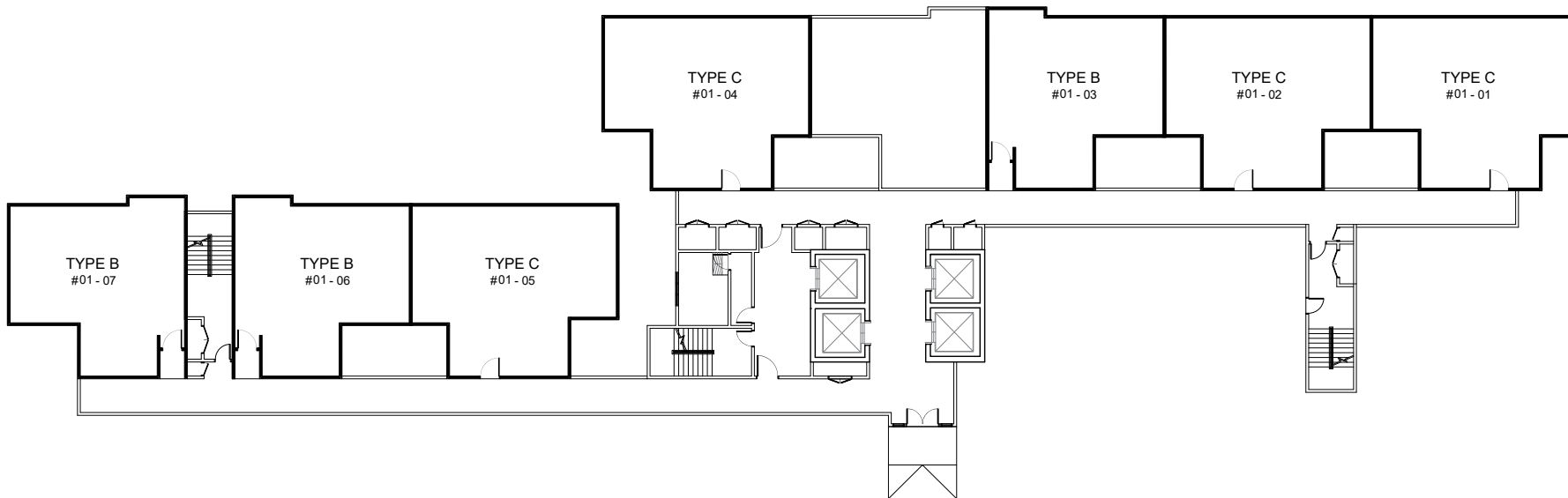
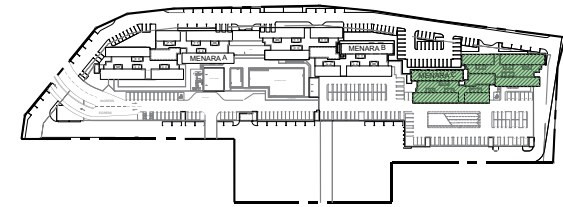

**TOWER C**  
**LEVEL GROUND FLOOR**

**NOTE:**

1. Not to scale.
2. The unit number is an indicative number only and does not represent the house numbering in the actual address.
3. Unit numbers, plans, layouts and other information contained herein are intended to give a general indication of the proposed design only and are subject to change and/or amendments as may be required or as directed by the relevant authorities/engineer(s)/architect.

<b>QUICK LINKS</b>
<b>TOWER A</b>
Storey Chart
Ground Floor
1 <sup>st</sup> Floor
2 <sup>nd</sup> Floor
3 <sup>rd</sup> Floor
4 <sup>th</sup> Floor
5 <sup>th</sup> Floor
6 <sup>th</sup> Floor
Typical Floor
Break Tank Floor
<b>TOWER B</b>
Storey Chart
Ground Floor
1 <sup>st</sup> Floor
2 <sup>nd</sup> Floor
3 <sup>rd</sup> Floor
4 <sup>th</sup> Floor
5 <sup>th</sup> Floor
6 <sup>th</sup> Floor
7 <sup>th</sup> Floor
Typical Floor
Break Tank Floor
<b>TOWER C</b>
Storey Chart
Ground Floor
1 <sup>st</sup> Floor
2 <sup>nd</sup> Floor
3 <sup>rd</sup> Floor
4 <sup>th</sup> Floor
5 <sup>th</sup> Floor
6 <sup>th</sup> Floor
7 <sup>th</sup> Floor
Typical Floor
Break Tank Floor
<b>UNIT PLAN</b>
<b>4TH SCHEDULE</b>

# TOWER C LEVEL 1<sup>ST</sup> FLOOR



**QUICK LINKS**

**TOWER A**

- [Storey Chart](#)
- [Ground Floor](#)
- [1<sup>st</sup> Floor](#)
- [2<sup>nd</sup> Floor](#)
- [3<sup>rd</sup> Floor](#)
- [4<sup>th</sup> Floor](#)
- [5<sup>th</sup> Floor](#)
- [6<sup>th</sup> Floor](#)
- [Typical Floor](#)
- [Break Tank Floor](#)

**TOWER B**

- [Storey Chart](#)
- [Ground Floor](#)
- [1<sup>st</sup> Floor](#)
- [2<sup>nd</sup> Floor](#)
- [3<sup>rd</sup> Floor](#)
- [4<sup>th</sup> Floor](#)
- [5<sup>th</sup> Floor](#)
- [6<sup>th</sup> Floor](#)
- [7<sup>th</sup> Floor](#)
- [Typical Floor](#)
- [Break Tank Floor](#)

**TOWER C**

- [Storey Chart](#)
- [Ground Floor](#)
- [1<sup>st</sup> Floor](#)
- [2<sup>nd</sup> Floor](#)
- [3<sup>rd</sup> Floor](#)
- [4<sup>th</sup> Floor](#)
- [5<sup>th</sup> Floor](#)
- [6<sup>th</sup> Floor](#)
- [7<sup>th</sup> Floor](#)
- [Typical Floor](#)
- [Break Tank Floor](#)

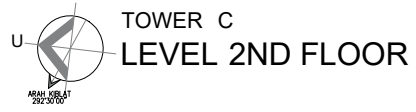
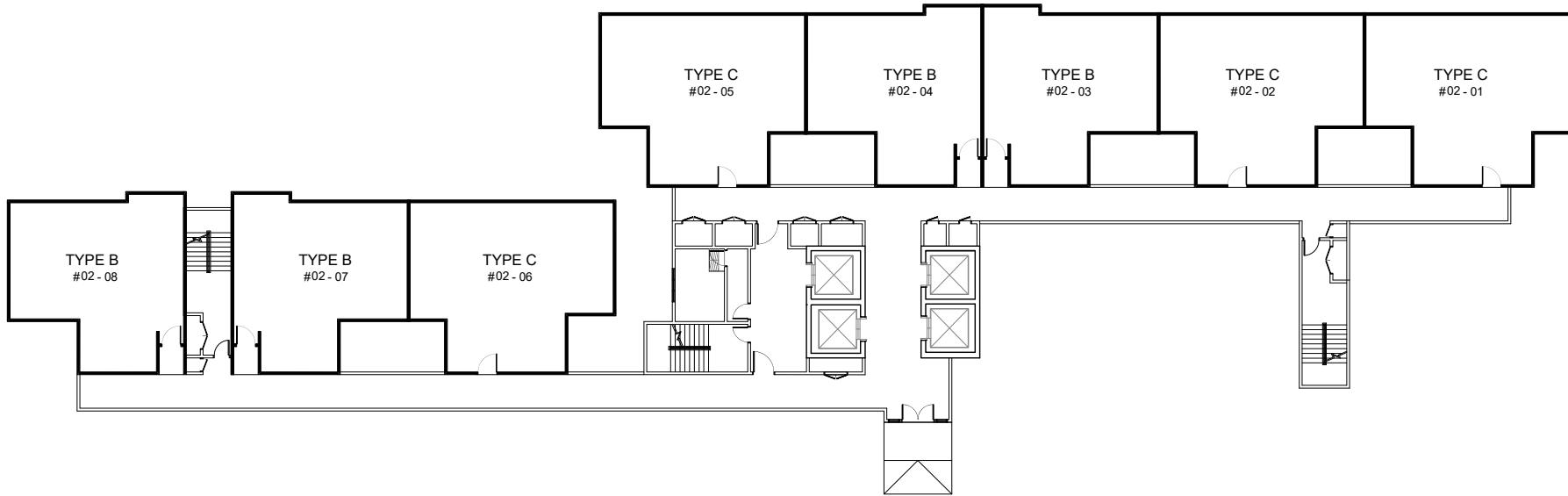
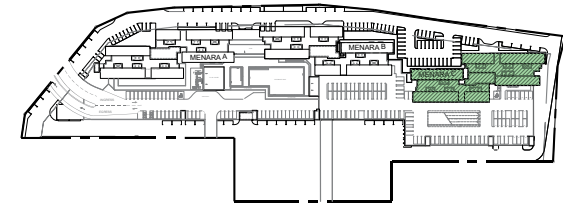
**UNIT PLAN**

**4TH SCHEDULE**

**NOTE:**

1. Not to scale.
2. The unit number is an indicative number only and does not represent the house numbering in the actual address.
3. Unit numbers, plans, layouts and other information contained herein are intended to give a general indication of the proposed design only and are subject to change and/or amendments as may be required or as directed by the relevant authorities/engineer(s)/architect.

# TOWER C LEVEL 2<sup>ND</sup> FLOOR



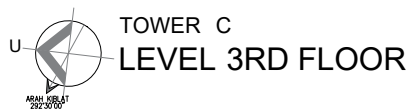
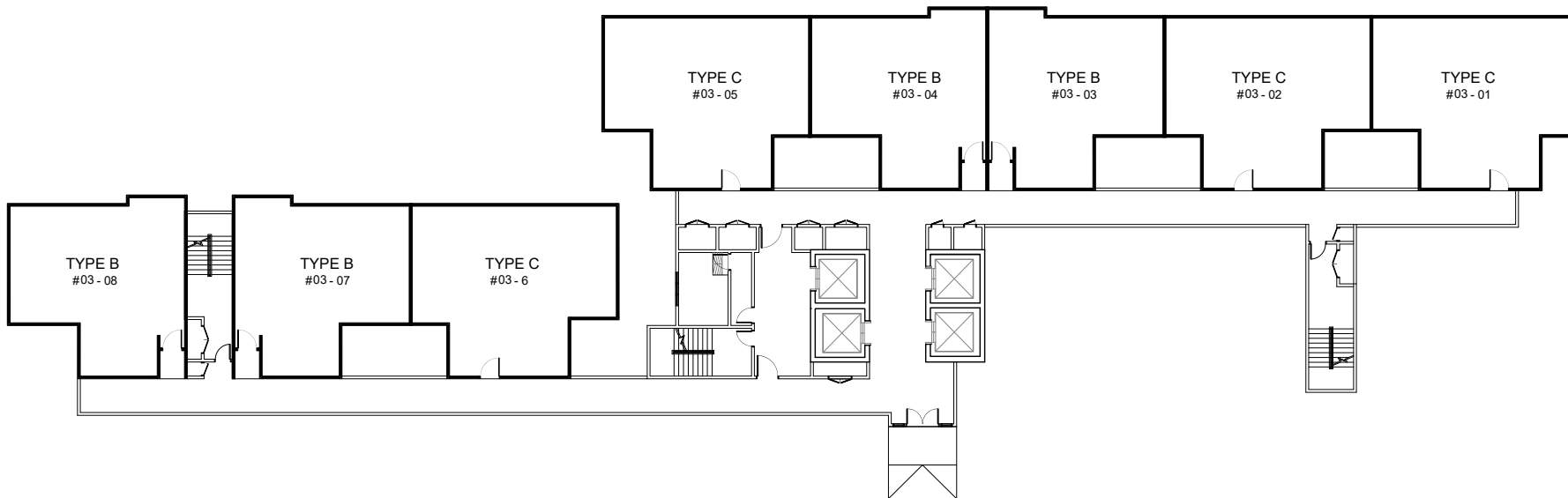
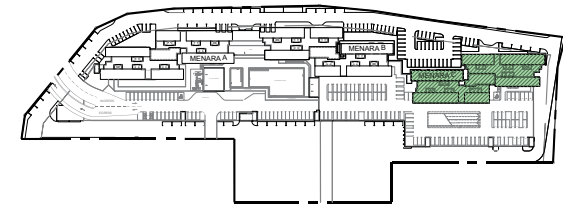
**QUICK LINKS**

- TOWER A**
- Storey Chart
- Ground Floor
- 1<sup>st</sup> Floor
- 2<sup>nd</sup> Floor
- 3<sup>rd</sup> Floor
- 4<sup>th</sup> Floor
- 5<sup>th</sup> Floor
- 6<sup>th</sup> Floor
- Typical Floor
- Break Tank Floor
- TOWER B**
- Storey Chart
- Ground Floor
- 1<sup>st</sup> Floor
- 2<sup>nd</sup> Floor
- 3<sup>rd</sup> Floor
- 4<sup>th</sup> Floor
- 5<sup>th</sup> Floor
- 6<sup>th</sup> Floor
- 7<sup>th</sup> Floor
- Typical Floor
- Break Tank Floor
- TOWER C**
- Storey Chart
- Ground Floor
- 1<sup>st</sup> Floor
- 2<sup>nd</sup> Floor
- 3<sup>rd</sup> Floor
- 4<sup>th</sup> Floor
- 5<sup>th</sup> Floor
- 6<sup>th</sup> Floor
- 7<sup>th</sup> Floor
- Typical Floor
- Break Tank Floor
- UNIT PLAN**
- 4TH SCHEDULE**

**NOTE:**

1. Not to scale.
2. The unit number is an indicative number only and does not represent the house numbering in the actual address.
3. Unit numbers, plans, layouts and other information contained herein are intended to give a general indication of the proposed design only and are subject to change and/or amendments as may be required or as directed by the relevant authorities/engineer(s)/architect.

# TOWER C LEVEL 3<sup>RD</sup> FLOOR

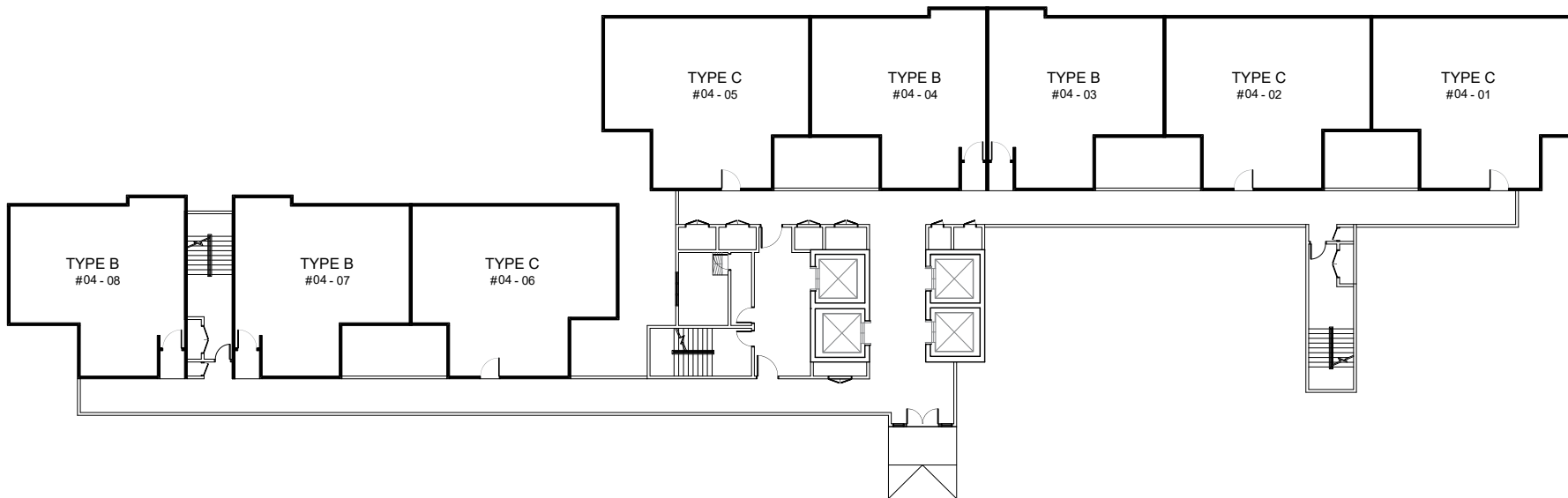
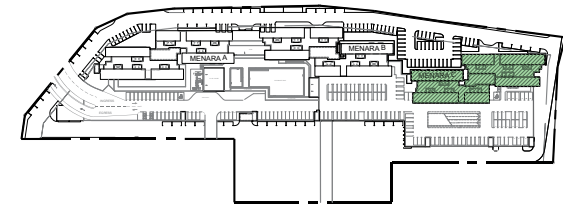


<b>QUICK LINKS</b>
<b>TOWER A</b>
Storey Chart
Ground Floor
1 <sup>st</sup> Floor
2 <sup>nd</sup> Floor
3 <sup>rd</sup> Floor
4 <sup>th</sup> Floor
5 <sup>th</sup> Floor
6 <sup>th</sup> Floor
Typical Floor
Break Tank Floor
<b>TOWER B</b>
Storey Chart
Ground Floor
1 <sup>st</sup> Floor
2 <sup>nd</sup> Floor
3 <sup>rd</sup> Floor
4 <sup>th</sup> Floor
5 <sup>th</sup> Floor
6 <sup>th</sup> Floor
7 <sup>th</sup> Floor
Typical Floor
Break Tank Floor
<b>TOWER C</b>
Storey Chart
Ground Floor
1 <sup>st</sup> Floor
2 <sup>nd</sup> Floor
3 <sup>rd</sup> Floor
4 <sup>th</sup> Floor
5 <sup>th</sup> Floor
6 <sup>th</sup> Floor
7 <sup>th</sup> Floor
Typical Floor
Break Tank Floor
<b>UNIT PLAN</b>
<b>4TH SCHEDULE</b>

**NOTE:**

1. Not to scale.
2. The unit number is an indicative number only and does not represent the house numbering in the actual address.
3. Unit numbers, plans, layouts and other information contained herein are intended to give a general indication of the proposed design only and are subject to change and/or amendments as may be required or as directed by the relevant authorities/engineer(s)/architect.

# TOWER C LEVEL 4<sup>TH</sup> FLOOR



**QUICK LINKS**

**TOWER A**

Storey Chart

Ground Floor

1<sup>st</sup> Floor

2<sup>nd</sup> Floor

3<sup>rd</sup> Floor

4<sup>th</sup> Floor

5<sup>th</sup> Floor

6<sup>th</sup> Floor

Typical Floor

Break Tank Floor

**TOWER B**

Storey Chart

Ground Floor

1<sup>st</sup> Floor

2<sup>nd</sup> Floor

3<sup>rd</sup> Floor

4<sup>th</sup> Floor

5<sup>th</sup> Floor

6<sup>th</sup> Floor

7<sup>th</sup> Floor

Typical Floor

Break Tank Floor

**TOWER C**

Storey Chart

Ground Floor

1<sup>st</sup> Floor

2<sup>nd</sup> Floor

3<sup>rd</sup> Floor

4<sup>th</sup> Floor

5<sup>th</sup> Floor

6<sup>th</sup> Floor

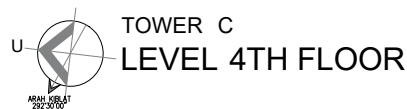
7<sup>th</sup> Floor

Typical Floor

Break Tank Floor

**UNIT PLAN**

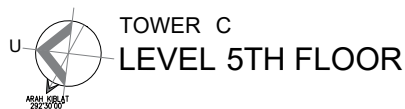
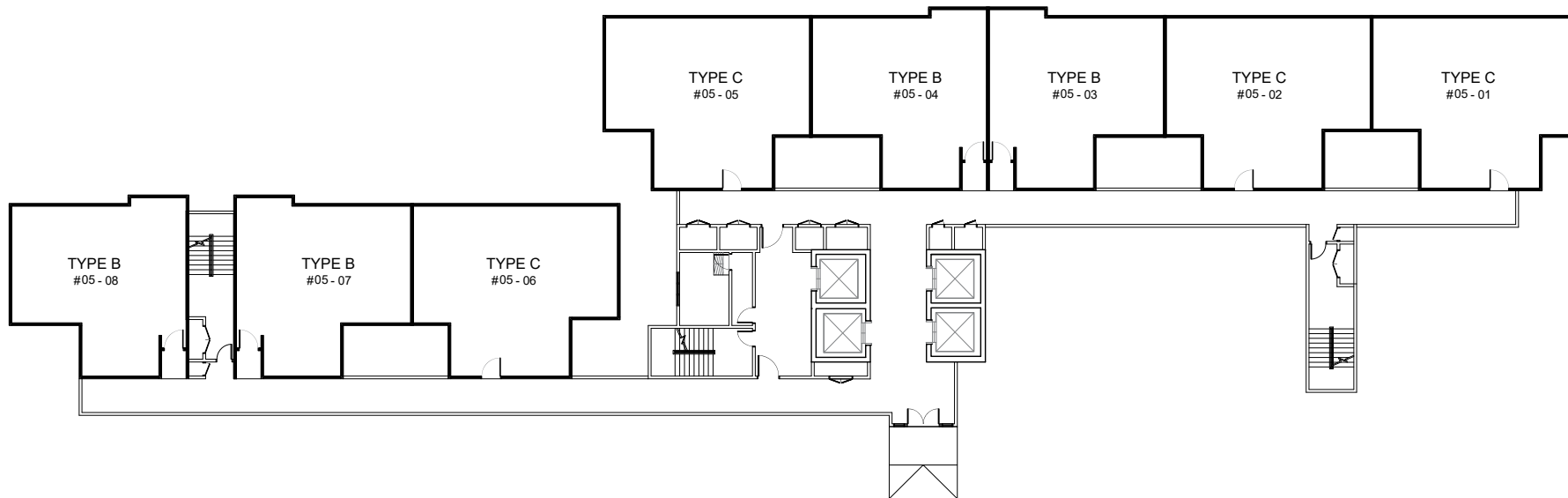
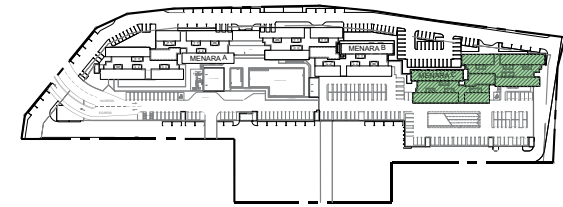
**4TH SCHEDULE**



**NOTE:**

1. Not to scale.
2. The unit number is an indicative number only and does not represent the house numbering in the actual address.
3. Unit numbers, plans, layouts and other information contained herein are intended to give a general indication of the proposed design only and are subject to change and/or amendments as may be required or as directed by the relevant authorities/engineer(s)/architect.

# TOWER C LEVEL 5<sup>TH</sup> FLOOR

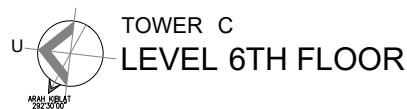
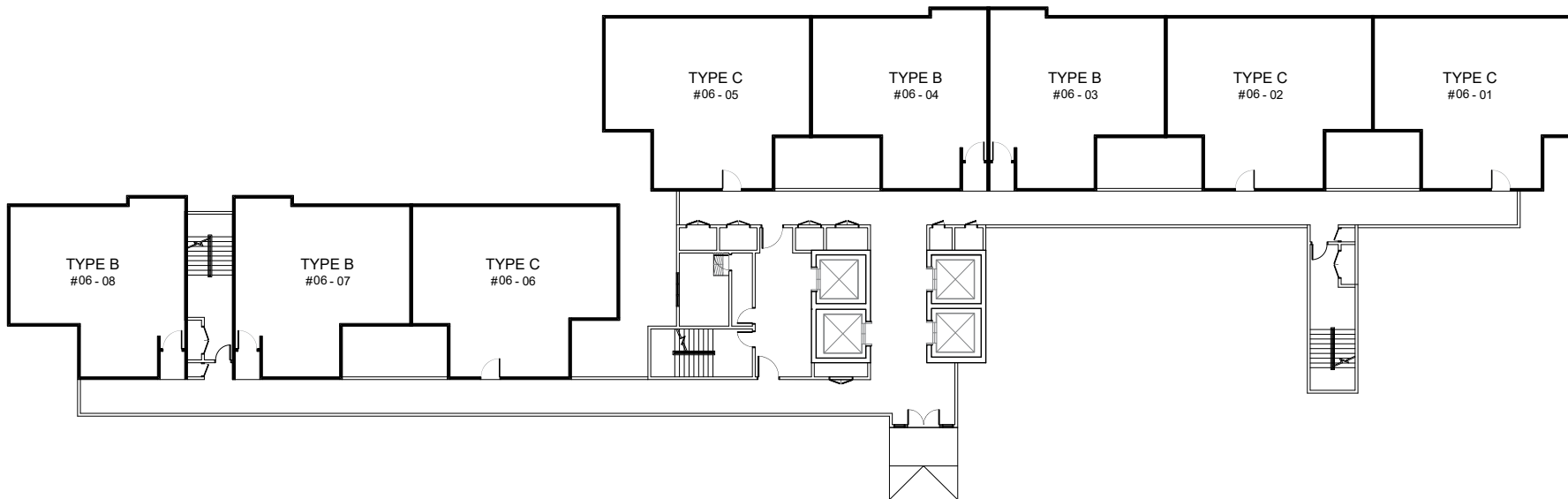
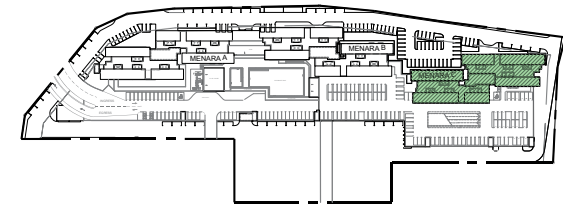


**NOTE:**

1. Not to scale.
2. The unit number is an indicative number only and does not represent the house numbering in the actual address.
3. Unit numbers, plans, layouts and other information contained herein are intended to give a general indication of the proposed design only and are subject to change and/or amendments as may be required or as directed by the relevant authorities/engineer(s)/architect.

<b>QUICK LINKS</b>
<b>TOWER A</b>
Storey Chart
Ground Floor
1 <sup>st</sup> Floor
2 <sup>nd</sup> Floor
3 <sup>rd</sup> Floor
4 <sup>th</sup> Floor
5 <sup>th</sup> Floor
6 <sup>th</sup> Floor
Typical Floor
Break Tank Floor
<b>TOWER B</b>
Storey Chart
Ground Floor
1 <sup>st</sup> Floor
2 <sup>nd</sup> Floor
3 <sup>rd</sup> Floor
4 <sup>th</sup> Floor
5 <sup>th</sup> Floor
6 <sup>th</sup> Floor
7 <sup>th</sup> Floor
Typical Floor
Break Tank Floor
<b>TOWER C</b>
Storey Chart
Ground Floor
1 <sup>st</sup> Floor
2 <sup>nd</sup> Floor
3 <sup>rd</sup> Floor
4 <sup>th</sup> Floor
5 <sup>th</sup> Floor
6 <sup>th</sup> Floor
7 <sup>th</sup> Floor
Typical Floor
Break Tank Floor
<b>UNIT PLAN</b>
<b>4TH SCHEDULE</b>

# TOWER C LEVEL 6<sup>TH</sup> FLOOR



**QUICK LINKS**

**TOWER A**

- [Storey Chart](#)
- [Ground Floor](#)
- [1<sup>st</sup> Floor](#)
- [2<sup>nd</sup> Floor](#)
- [3<sup>rd</sup> Floor](#)
- [4<sup>th</sup> Floor](#)
- [5<sup>th</sup> Floor](#)
- [6<sup>th</sup> Floor](#)
- [Typical Floor](#)
- [Break Tank Floor](#)

**TOWER B**

- [Storey Chart](#)
- [Ground Floor](#)
- [1<sup>st</sup> Floor](#)
- [2<sup>nd</sup> Floor](#)
- [3<sup>rd</sup> Floor](#)
- [4<sup>th</sup> Floor](#)
- [5<sup>th</sup> Floor](#)
- [6<sup>th</sup> Floor](#)
- [7<sup>th</sup> Floor](#)
- [Typical Floor](#)
- [Break Tank Floor](#)

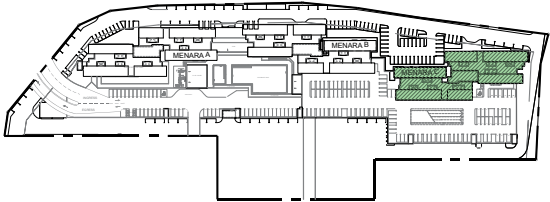
**TOWER C**

- [Storey Chart](#)
- [Ground Floor](#)
- [1<sup>st</sup> Floor](#)
- [2<sup>nd</sup> Floor](#)
- [3<sup>rd</sup> Floor](#)
- [4<sup>th</sup> Floor](#)
- [5<sup>th</sup> Floor](#)
- [6<sup>th</sup> Floor](#)
- [7<sup>th</sup> Floor](#)
- [Typical Floor](#)
- [Break Tank Floor](#)
- [UNIT PLAN](#)
- [4TH SCHEDULE](#)

**NOTE:**

1. Not to scale.
2. The unit number is an indicative number only and does not represent the house numbering in the actual address.
3. Unit numbers, plans, layouts and other information contained herein are intended to give a general indication of the proposed design only and are subject to change and/or amendments as may be required or as directed by the relevant authorities/engineer(s)/architect.

# TOWER C LEVEL 7<sup>TH</sup> FLOOR



**QUICK LINKS**

**TOWER A**

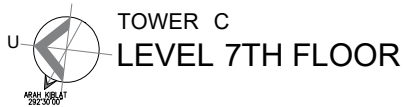
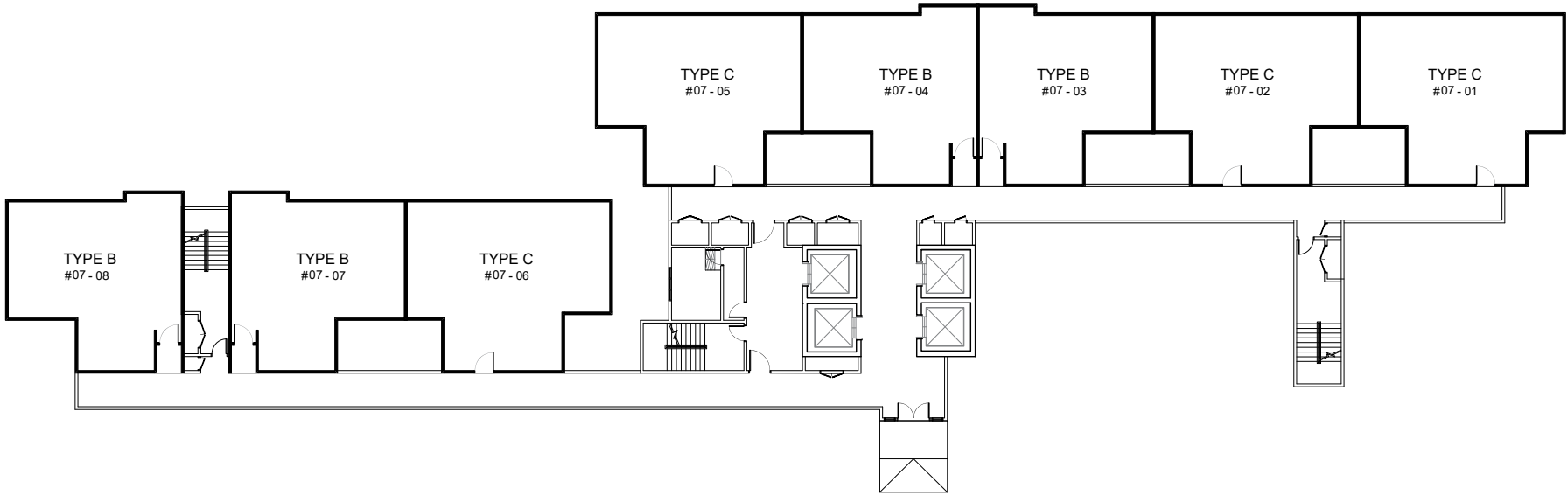
- [Storey Chart](#)
- [Ground Floor](#)
- [1<sup>st</sup> Floor](#)
- [2<sup>nd</sup> Floor](#)
- [3<sup>rd</sup> Floor](#)
- [4<sup>th</sup> Floor](#)
- [5<sup>th</sup> Floor](#)
- [6<sup>th</sup> Floor](#)
- [Typical Floor](#)
- [Break Tank Floor](#)

**TOWER B**

- [Storey Chart](#)
- [Ground Floor](#)
- [1<sup>st</sup> Floor](#)
- [2<sup>nd</sup> Floor](#)
- [3<sup>rd</sup> Floor](#)
- [4<sup>th</sup> Floor](#)
- [5<sup>th</sup> Floor](#)
- [6<sup>th</sup> Floor](#)
- [7<sup>th</sup> Floor](#)
- [Typical Floor](#)
- [Break Tank Floor](#)

**TOWER C**

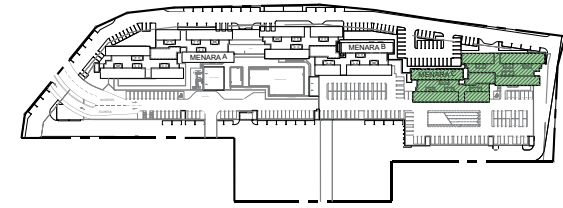
- [Storey Chart](#)
- [Ground Floor](#)
- [1<sup>st</sup> Floor](#)
- [2<sup>nd</sup> Floor](#)
- [3<sup>rd</sup> Floor](#)
- [4<sup>th</sup> Floor](#)
- [5<sup>th</sup> Floor](#)
- [6<sup>th</sup> Floor](#)
- [7<sup>th</sup> Floor](#)
- [Typical Floor](#)
- [Break Tank Floor](#)
- [UNIT PLAN](#)
- [4TH SCHEDULE](#)



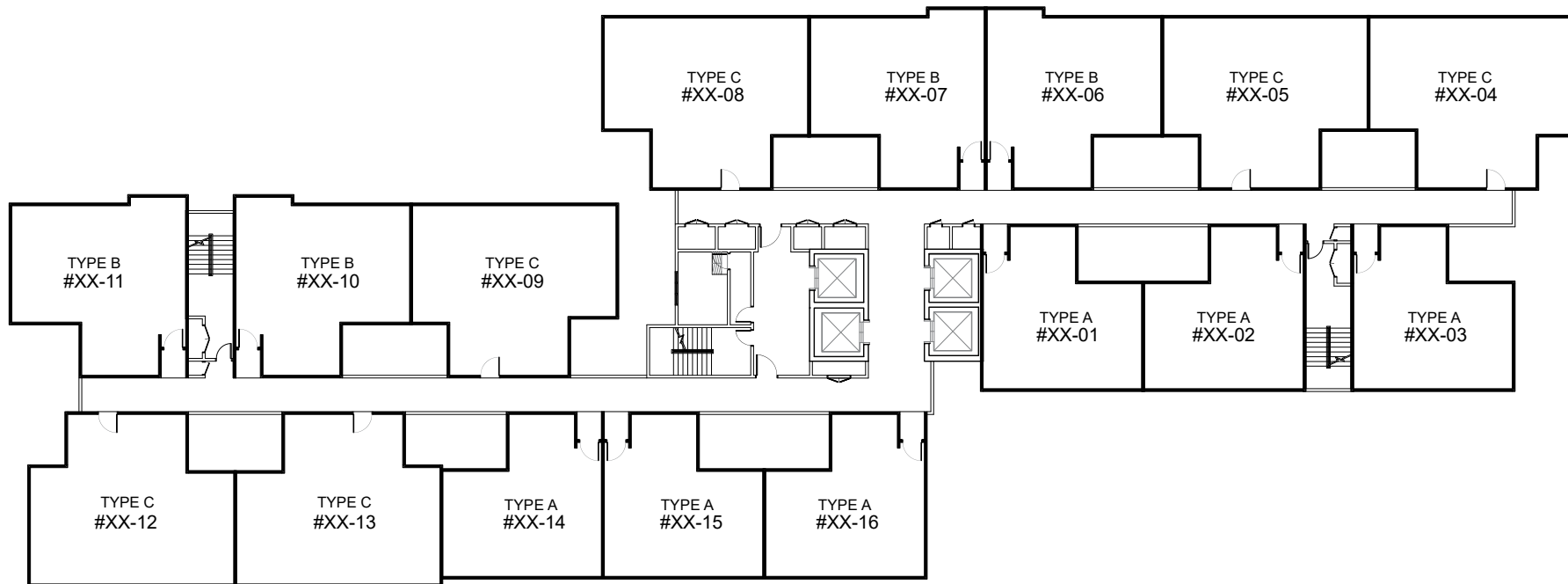
- NOTE:**
1. Not to scale.
  2. The unit number is an indicative number only and does not represent the house numbering in the actual address.
  3. Unit numbers, plans, layouts and other information contained herein are intended to give a general indication of the proposed design only and are subject to change and/or amendments as may be required or as directed by the relevant authorities/engineer(s)/architect.

# TOWER C TYPICAL FLOOR PLAN

## LEVEL 8<sup>TH</sup> - 17<sup>TH</sup> & 19<sup>TH</sup> - 22<sup>ND</sup> FLOOR



\*XX=Level Number



**QUICK LINKS**

- TOWER A**
- Storey Chart
- Ground Floor
- 1<sup>st</sup> Floor
- 2<sup>nd</sup> Floor
- 3<sup>rd</sup> Floor
- 4<sup>th</sup> Floor
- 5<sup>th</sup> Floor
- 6<sup>th</sup> Floor
- Typical Floor
- Break Tank Floor
- TOWER B**
- Storey Chart
- Ground Floor
- 1<sup>st</sup> Floor
- 2<sup>nd</sup> Floor
- 3<sup>rd</sup> Floor
- 4<sup>th</sup> Floor
- 5<sup>th</sup> Floor
- 6<sup>th</sup> Floor
- 7<sup>th</sup> Floor
- Typical Floor
- Break Tank Floor
- TOWER C**
- Storey Chart
- Ground Floor
- 1<sup>st</sup> Floor
- 2<sup>nd</sup> Floor
- 3<sup>rd</sup> Floor
- 4<sup>th</sup> Floor
- 5<sup>th</sup> Floor
- 6<sup>th</sup> Floor
- 7<sup>th</sup> Floor
- Typical Floor
- Break Tank Floor
- UNIT PLAN**
- 4TH SCHEDULE

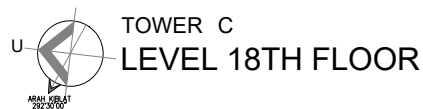
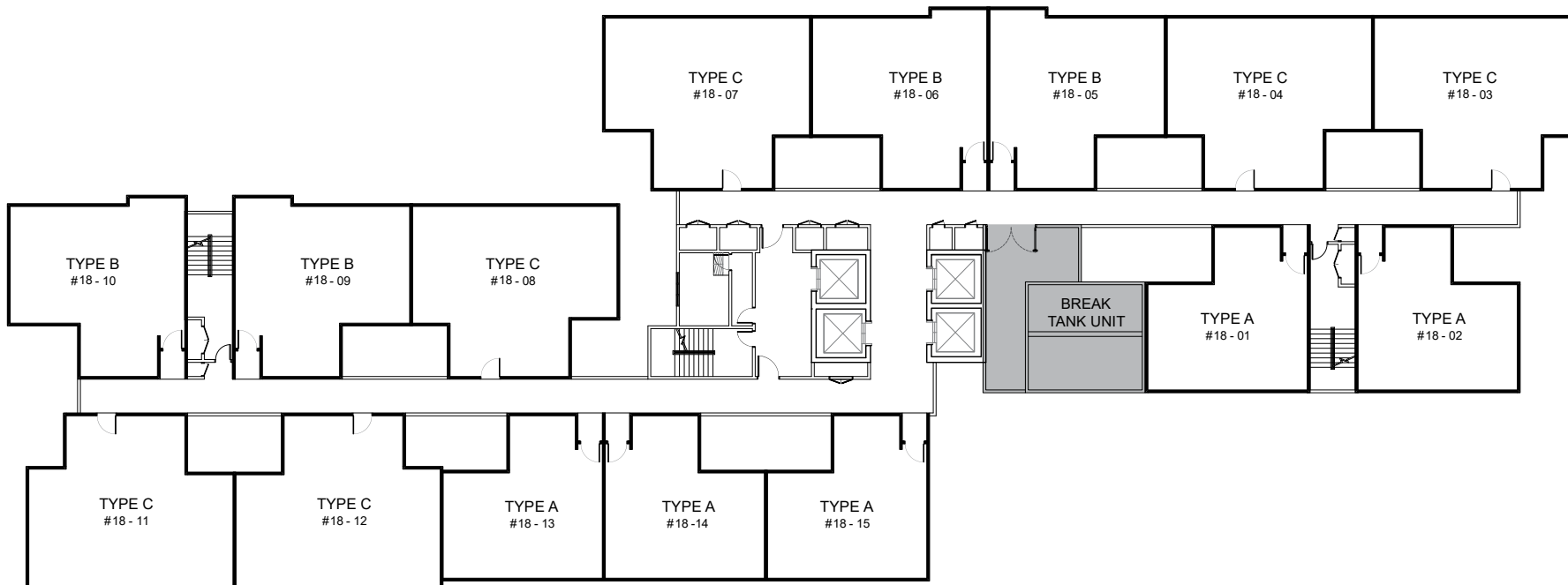
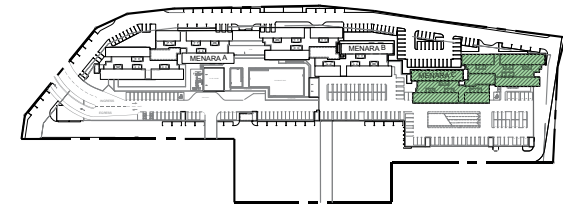


TOWER C  
LEVEL 8<sup>TH</sup> - 17<sup>TH</sup> & 19<sup>TH</sup> - 22<sup>ND</sup>

**NOTE:**

1. Not to scale.
2. The unit number is an indicative number only and does not represent the house numbering in the actual address.
3. Unit numbers, plans, layouts and other information contained herein are intended to give a general indication of the proposed design only and are subject to change and/or amendments as may be required or as directed by the relevant authorities/engineer(s)/architect.

# TOWER C BREAK TANK LEVEL LEVEL 18<sup>TH</sup> FLOOR



**QUICK LINKS**

- TOWER A**
- Storey Chart
- Ground Floor
- 1<sup>st</sup> Floor
- 2<sup>nd</sup> Floor
- 3<sup>rd</sup> Floor
- 4<sup>th</sup> Floor
- 5<sup>th</sup> Floor
- 6<sup>th</sup> Floor
- Typical Floor
- Break Tank Floor
- TOWER B**
- Storey Chart
- Ground Floor
- 1<sup>st</sup> Floor
- 2<sup>nd</sup> Floor
- 3<sup>rd</sup> Floor
- 4<sup>th</sup> Floor
- 5<sup>th</sup> Floor
- 6<sup>th</sup> Floor
- 7<sup>th</sup> Floor
- Typical Floor
- Break Tank Floor
- TOWER C**
- Storey Chart
- Ground Floor
- 1<sup>st</sup> Floor
- 2<sup>nd</sup> Floor
- 3<sup>rd</sup> Floor
- 4<sup>th</sup> Floor
- 5<sup>th</sup> Floor
- 6<sup>th</sup> Floor
- 7<sup>th</sup> Floor
- Typical Floor
- Break Tank Floor
- UNIT PLAN**
- 4TH SCHEDULE**

**NOTE:**

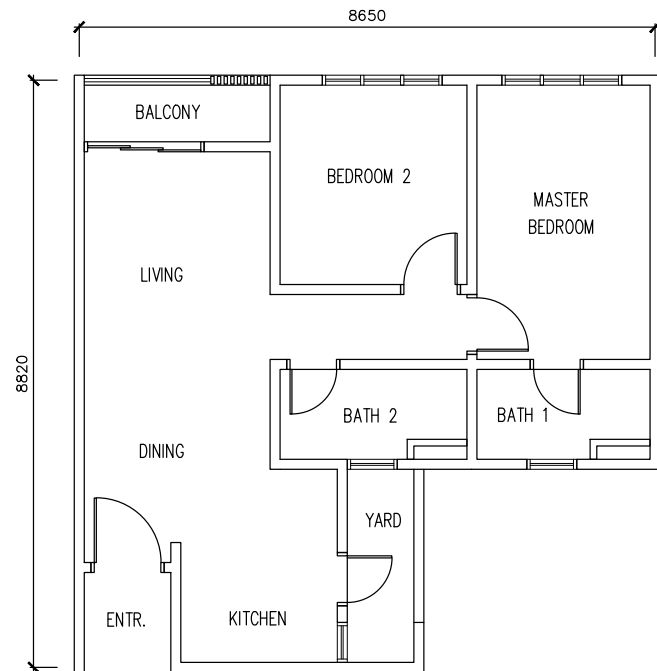
1. Not to scale.
2. The unit number is an indicative number only and does not represent the house numbering in the actual address.
3. Unit numbers, plans, layouts and other information contained herein are intended to give a general indication of the proposed design only and are subject to change and/or amendments as may be required or as directed by the relevant authorities/engineer(s)/architect.

# UNIT PLAN

## Type A (Right)

2 Rooms / 2 Baths / 1 Balcony

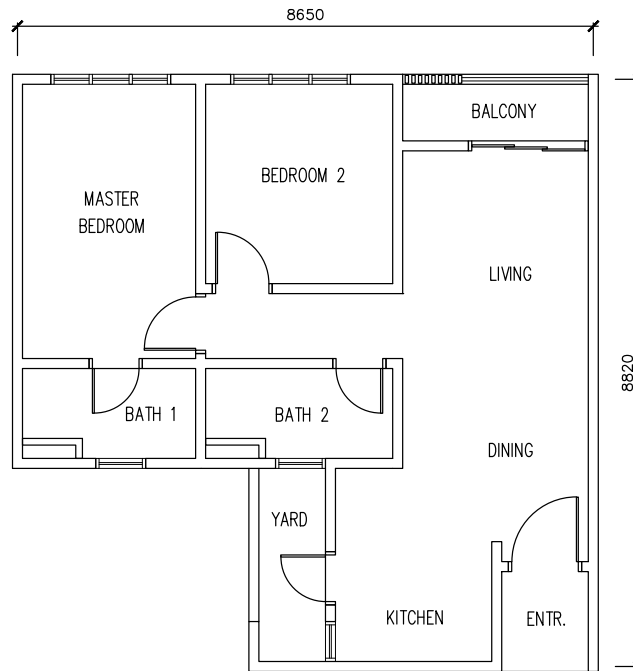
65.43 sq m • 704.28 sq ft



## Type A (Left)

2 Rooms / 2 Baths / 1 Balcony

65.43 sq m • 704.28 sq ft



QUICK LINKS

TOWER A

Storey Chart

Ground Floor

1<sup>st</sup> Floor

2<sup>nd</sup> Floor

3<sup>rd</sup> Floor

4<sup>th</sup> Floor

5<sup>th</sup> Floor

6<sup>th</sup> Floor

Typical Floor

Break Tank Floor

TOWER B

Storey Chart

Ground Floor

1<sup>st</sup> Floor

2<sup>nd</sup> Floor

3<sup>rd</sup> Floor

4<sup>th</sup> Floor

5<sup>th</sup> Floor

6<sup>th</sup> Floor

7<sup>th</sup> Floor

Typical Floor

Break Tank Floor

TOWER C

Storey Chart

Ground Floor

1<sup>st</sup> Floor

2<sup>nd</sup> Floor

3<sup>rd</sup> Floor

4<sup>th</sup> Floor

5<sup>th</sup> Floor

6<sup>th</sup> Floor

7<sup>th</sup> Floor

Typical Floor

Break Tank Floor

UNIT PLAN

4TH SCHEDULE

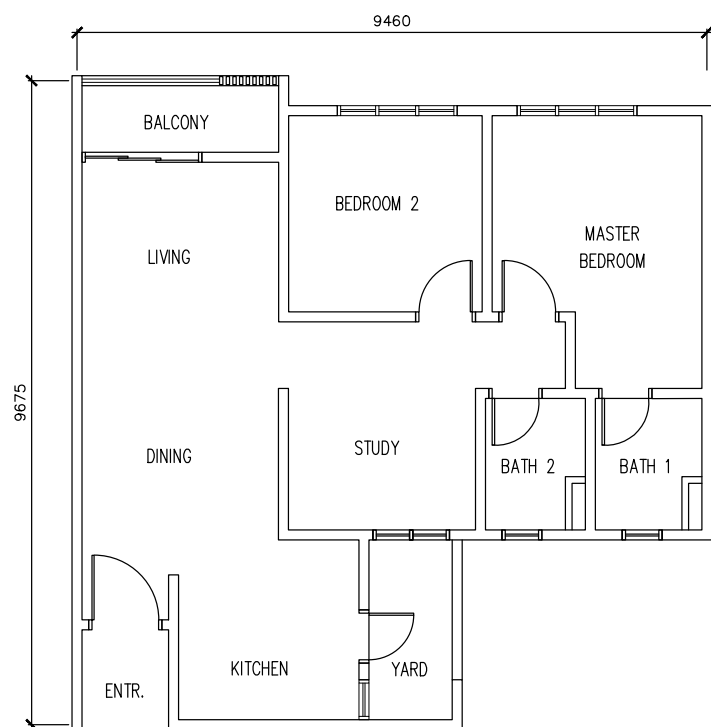
CONFIDENTIAL. FOR INTERNAL REFERENCE ONLY. PLEASE DO NOT DISTRIBUTE.

LAST UPDATED ON 9 SEPTEMBER 2024.

## Type B (Right)

2 Rooms / 1 Study Area / 2 Baths / 1 Balcony

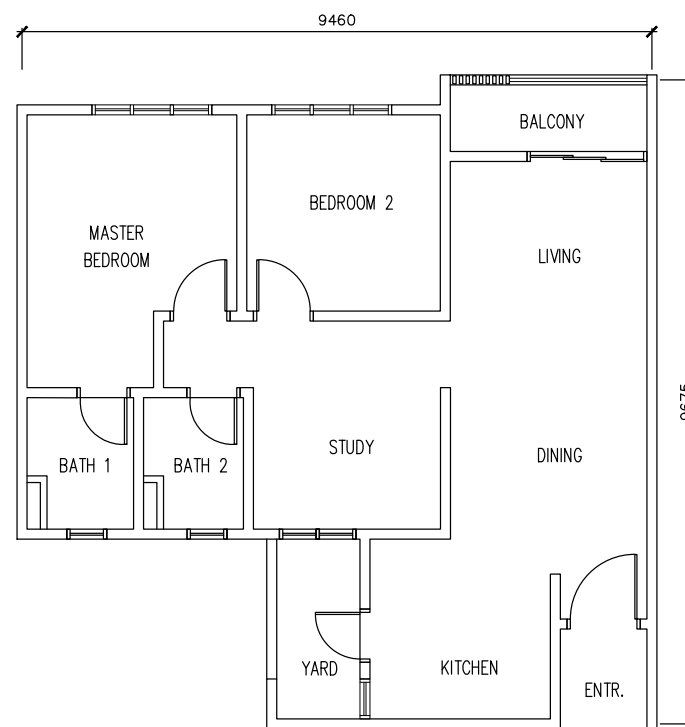
77.93 sq m • 838.83 sq ft



## Type B (Left)

2 Rooms / 1 Study Area / 2 Baths / 1 Balcony

77.93 sq m • 838.83 sq ft



### QUICK LINKS

#### TOWER A

Storey Chart

Ground Floor

1<sup>st</sup> Floor

2<sup>nd</sup> Floor

3<sup>rd</sup> Floor

4<sup>th</sup> Floor

5<sup>th</sup> Floor

6<sup>th</sup> Floor

Typical Floor

Break Tank Floor

#### TOWER B

Storey Chart

Ground Floor

1<sup>st</sup> Floor

2<sup>nd</sup> Floor

3<sup>rd</sup> Floor

4<sup>th</sup> Floor

5<sup>th</sup> Floor

6<sup>th</sup> Floor

7<sup>th</sup> Floor

Typical Floor

Break Tank Floor

#### TOWER C

Storey Chart

Ground Floor

1<sup>st</sup> Floor

2<sup>nd</sup> Floor

3<sup>rd</sup> Floor

4<sup>th</sup> Floor

5<sup>th</sup> Floor

6<sup>th</sup> Floor

7<sup>th</sup> Floor

Typical Floor

Break Tank Floor

#### UNIT PLAN

4TH SCHEDULE

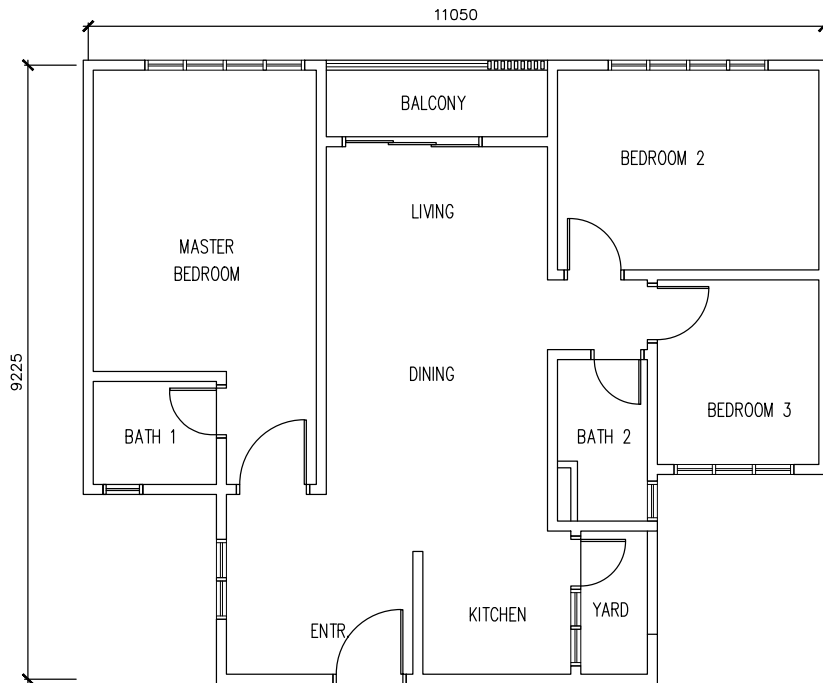
CONFIDENTIAL. FOR INTERNAL REFERENCE ONLY. PLEASE DO NOT DISTRIBUTE.

LAST UPDATED ON 9 SEPTEMBER 2024.

### Type C (Right)

3 Rooms / 2 Baths / 1 Balcony

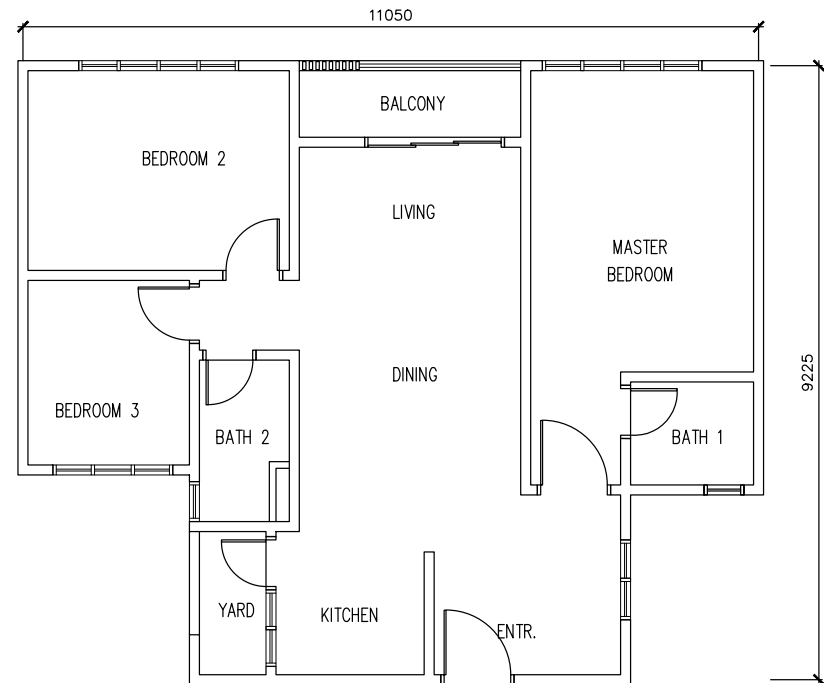
88.10 sq m • 948.30 sq ft



### Type C (Left)

3 Rooms / 2 Baths / 1 Balcony

88.10 sq m • 948.30 sq ft



- QUICK LINKS**
- TOWER A**
- Storey Chart
- Ground Floor
- 1<sup>st</sup> Floor
- 2<sup>nd</sup> Floor
- 3<sup>rd</sup> Floor
- 4<sup>th</sup> Floor
- 5<sup>th</sup> Floor
- 6<sup>th</sup> Floor
- Typical Floor
- Break Tank Floor
- TOWER B**
- Storey Chart
- Ground Floor
- 1<sup>st</sup> Floor
- 2<sup>nd</sup> Floor
- 3<sup>rd</sup> Floor
- 4<sup>th</sup> Floor
- 5<sup>th</sup> Floor
- 6<sup>th</sup> Floor
- 7<sup>th</sup> Floor
- Typical Floor
- Break Tank Floor
- TOWER C**
- Storey Chart
- Ground Floor
- 1<sup>st</sup> Floor
- 2<sup>nd</sup> Floor
- 3<sup>rd</sup> Floor
- 4<sup>th</sup> Floor
- 5<sup>th</sup> Floor
- 6<sup>th</sup> Floor
- 7<sup>th</sup> Floor
- Typical Floor
- Break Tank Floor
- UNIT PLAN**
- 4TH SCHEDULE**

# 4<sup>TH</sup> SCHEDULE: BUILDING SPECIFICATION

- a) Structure** : Reinforced Concrete Frame
- b) Wall** : Reinforced Concrete Wall/Brickwall/  
Light Weight Block (Where Applicable)
- c) Roof** : Reinforced Concrete Flat Roof
- d) Ceiling** : Skim Coat/Plaster Ceiling Board with Emulsion Paint  
(Where Applicable)
- e) Doors** : Metal Door Frame with Plywood/PVC/Wooden Door
- f) Window** : Aluminium Frame Glass Window
- g) Lockset** : Selected Quality Lockset
- h) Floor Finishes** : Tiles
- i) Wall Finishes** : Render/Plastering/Skim Coat with Emulsion Paint  
: Weather Resistant Paint on External Wall  
: Full Height Tiles at All Bathrooms  
: 1500mm Height Tile at Selected Kitchen Area

## Sanitary Fittings

Item	A	B	C
Kitchen Sink	1	1	1
Sitting WC	2	2	2
Wash Hand Basin	2	2	2
Shower Rose	2	2	2
Bib Tap	1	1	1
Hand Bidet	2	2	2

## Electrical Installation

Item	A	B	C
Lighting Point			
Fan Point			
Power Point 13A			
Power Point 15A			
Water Heater Power Point			
Air-cond Power Point			
SMATV Point			
Distribution Board			
Fiber Wall Socket			

### QUICK LINKS

#### TOWER A

Storey Chart

Ground Floor

1<sup>st</sup> Floor

2<sup>nd</sup> Floor

3<sup>rd</sup> Floor

4<sup>th</sup> Floor

5<sup>th</sup> Floor

6<sup>th</sup> Floor

Typical Floor

Break Tank Floor

#### TOWER B

Storey Chart

Ground Floor

1<sup>st</sup> Floor

2<sup>nd</sup> Floor

3<sup>rd</sup> Floor

4<sup>th</sup> Floor

5<sup>th</sup> Floor

6<sup>th</sup> Floor

7<sup>th</sup> Floor

Typical Floor

Break Tank Floor

#### TOWER C

Storey Chart

Ground Floor

1<sup>st</sup> Floor

2<sup>nd</sup> Floor

3<sup>rd</sup> Floor

4<sup>th</sup> Floor

5<sup>th</sup> Floor

6<sup>th</sup> Floor

7<sup>th</sup> Floor

Typical Floor

Break Tank Floor

#### UNIT PLAN

4TH SCHEDULE

